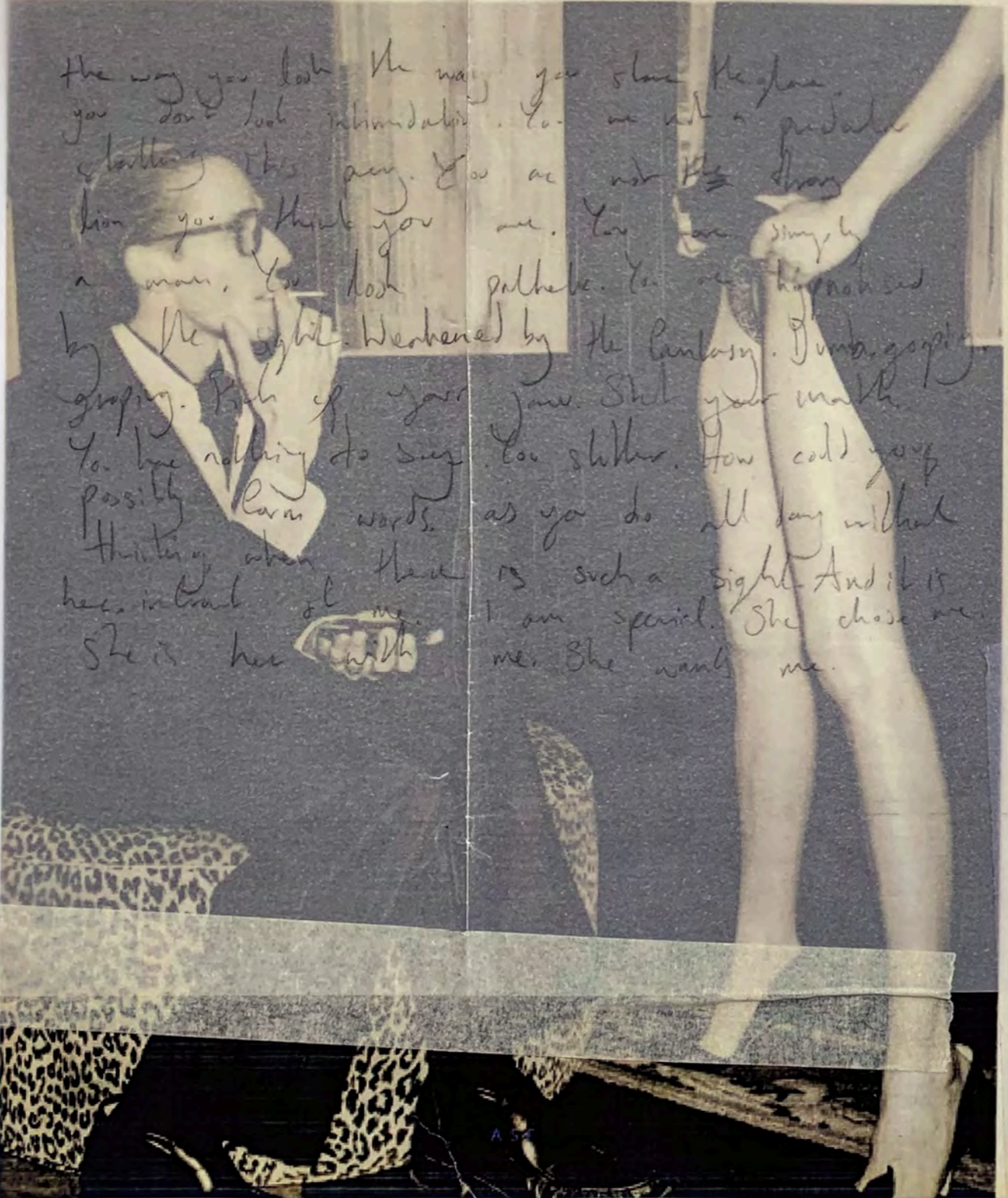
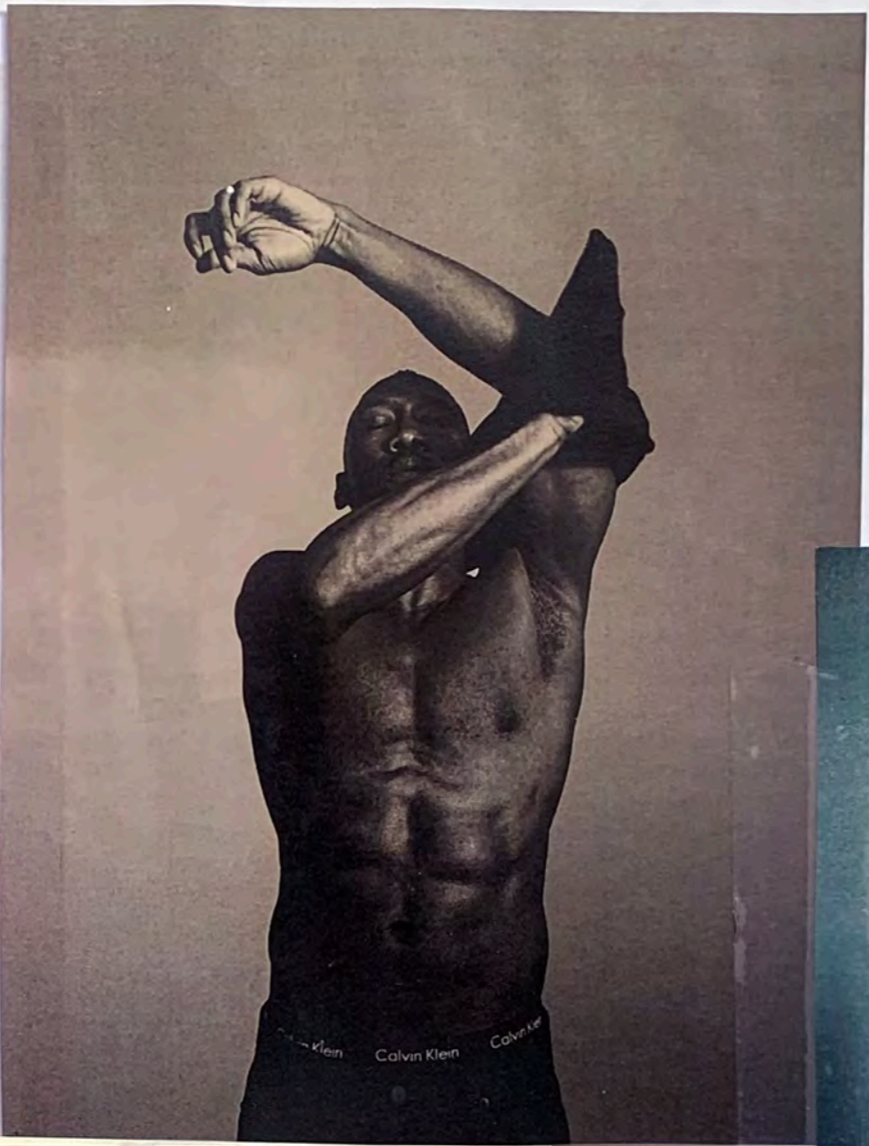


RESEARCH

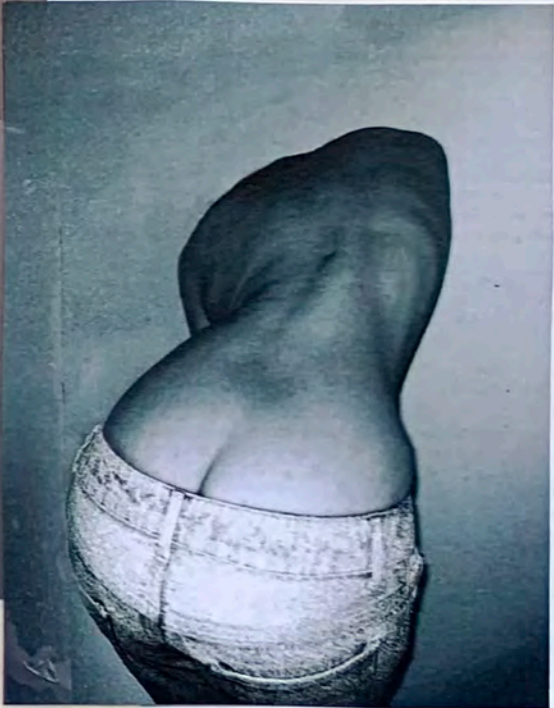
Previous page: Samuel wears black turtleneck by Yves Saint Laurent from Yves Saint Laurent Rive Gauche, 137 New Bond St, London W1, white shirt by Equipment, 25 Sloane St, London SW1, shoes by Patrick Cox, 8 Symons St, London SW3, glasses by Pierre Marly, 380 rue St Honoré, Paris. Astrid wears polka-dot chiffon shirt and skirt by Yves Saint Laurent, hat by Chloé from Browns  
 This page: Samuel wears suit, shirt, shoes and glasses as before. Astrid wears black dress by Givenchy Couture to order on 00 33 44 31 50 00, shoes by Givenchy from Harvey Nichols, Knightsbridge, London SW1, knickers by Ann Summers, 155 Charing Cross Rd, London W1



the way you look the way you show the face  
 you don't look intimidated. You are not a predator  
 slithering this way. You are not the strong  
 lion you thank you me. You are simply  
 a man. You look polite. You are hypnotized  
 by the subtle. Weakened by the fantasy. Dumbly gazing  
 gaping. Both of your jaws. Shut your mouth  
 You are nothing to say. You stutter. How could you  
 possibly learn words as you do all day without  
 thinking when there is such a sight. And it is  
 here instead of me. I am special. She chose me.  
 She is here with me. She wants me.



Calvin Klein ad.



pride | shame  
 reveal | hide  
 undress  
 intimate  
 human form

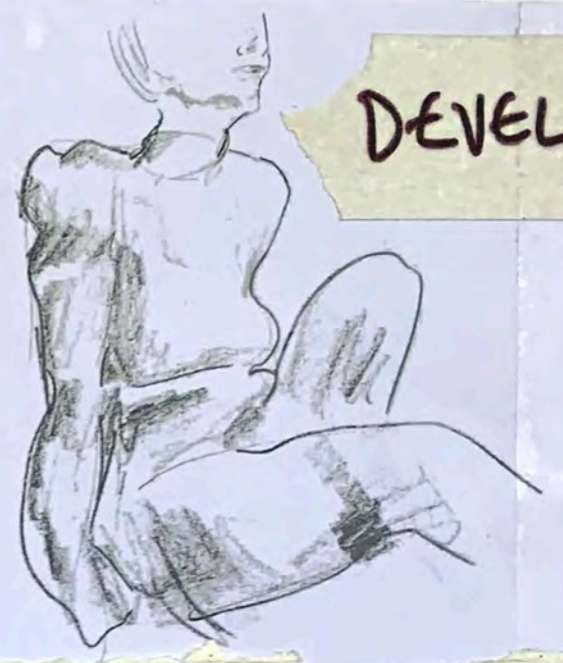


The Rape of Proserpina,  
 Gian Lorenzo.

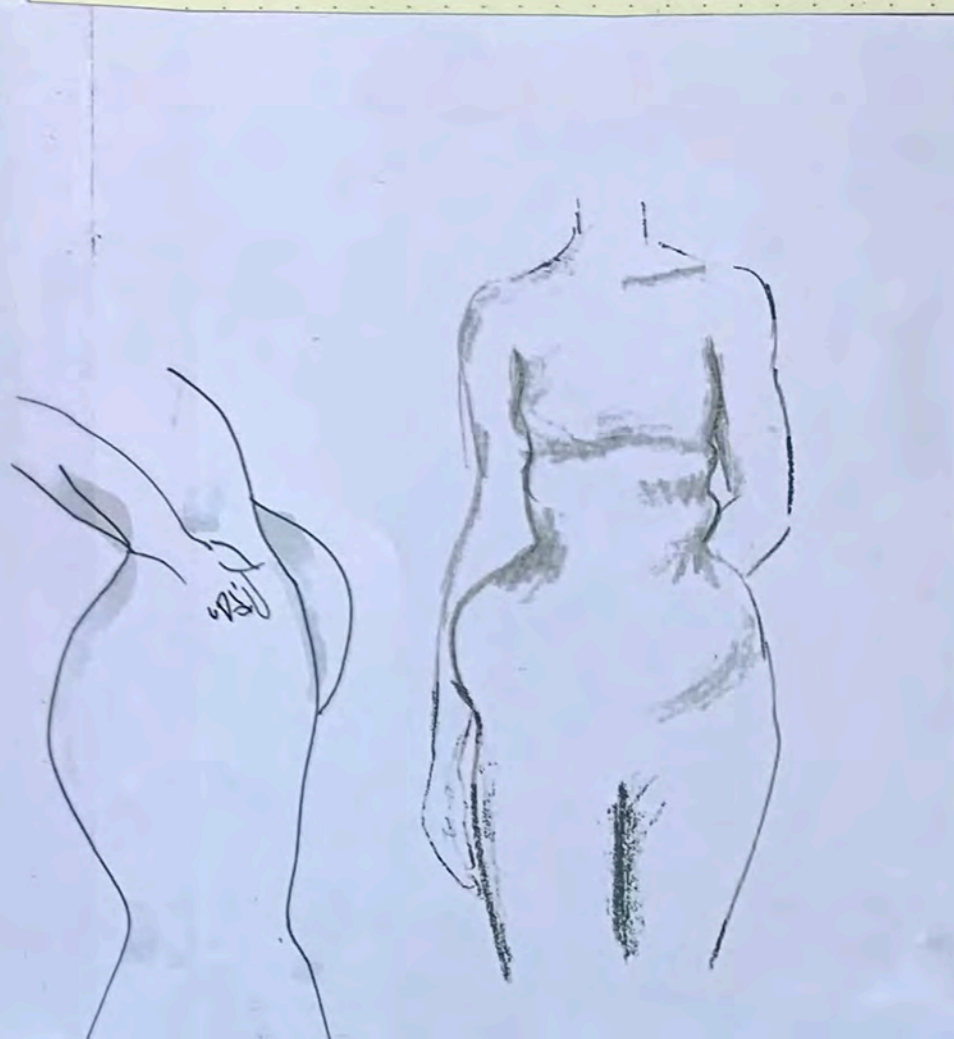
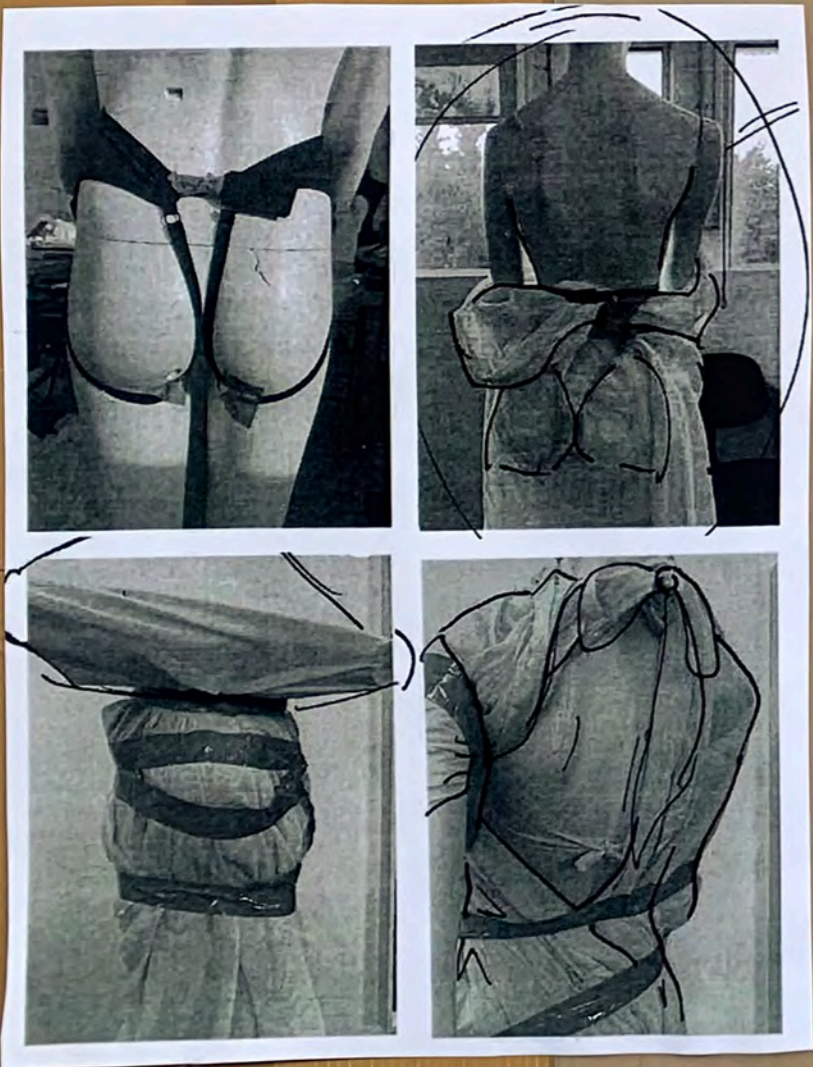
The Face, Archive.

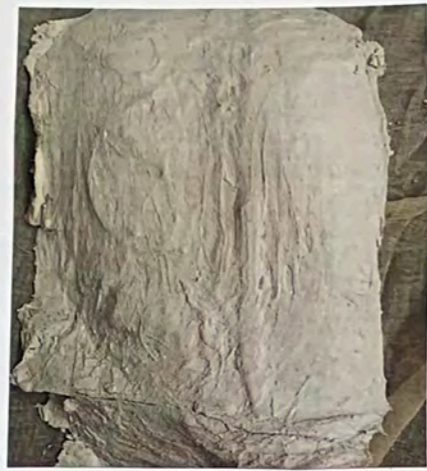
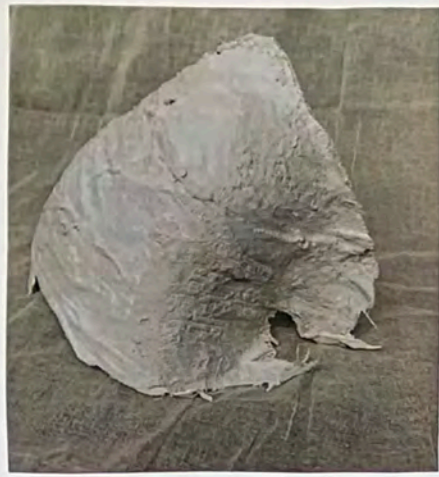


# DEVELOPMENT



Using belts to hold the body in uncomfortable positions and underwear to drape with. Accentuating and distorting parts of the figure manifests an unfamiliarity with one's own body





# DEVELOPMENT



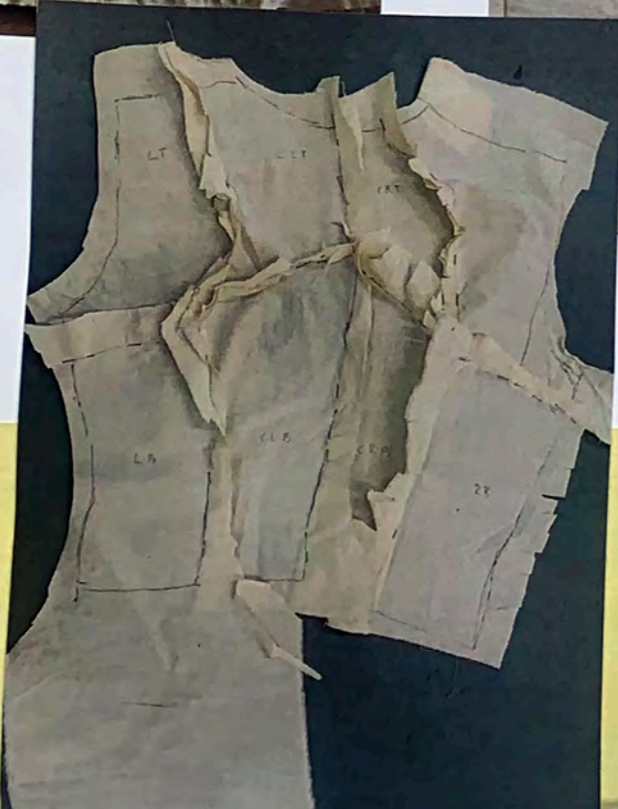
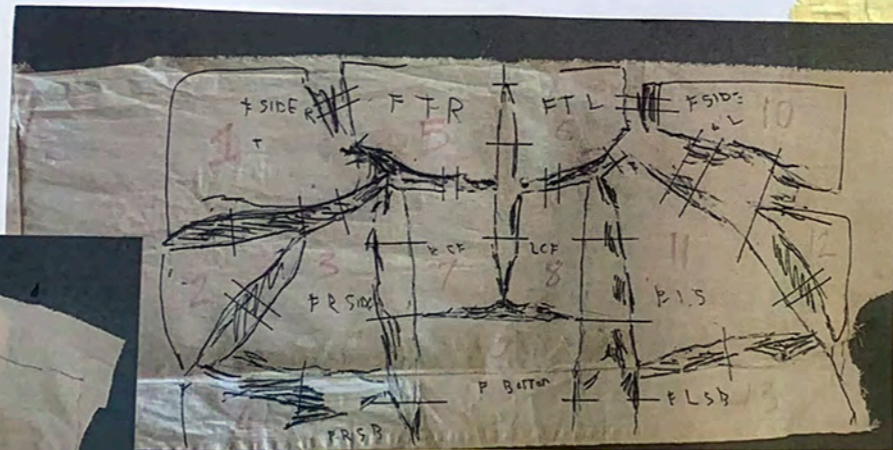
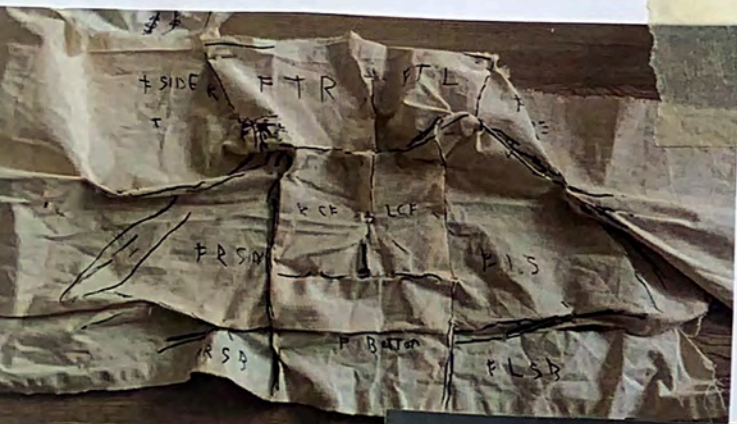
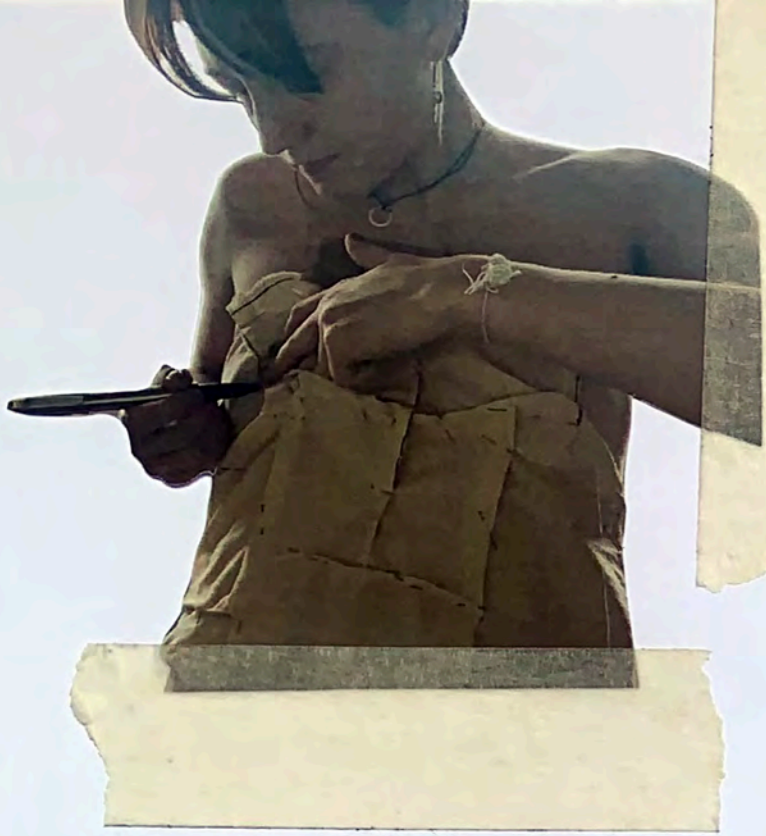
Casting body parts reflects an idea of an inability to free oneself. These are moved around the body to create an unrecognisable form .



Early cosmetic reconstruction



# DEVELOPMENT



Pattern cutting from the body further explores the idea of distorting ones own body.

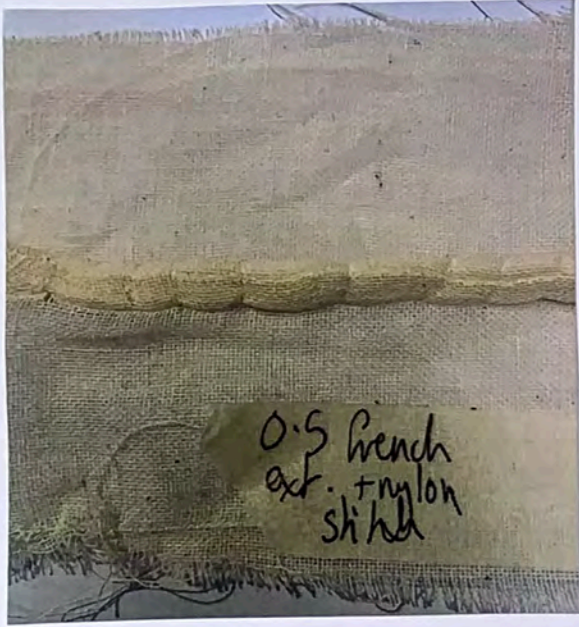




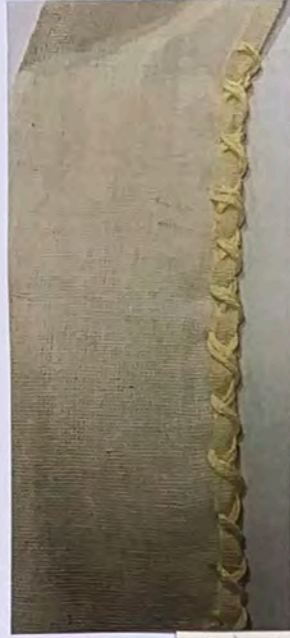
embossed + stitched leather



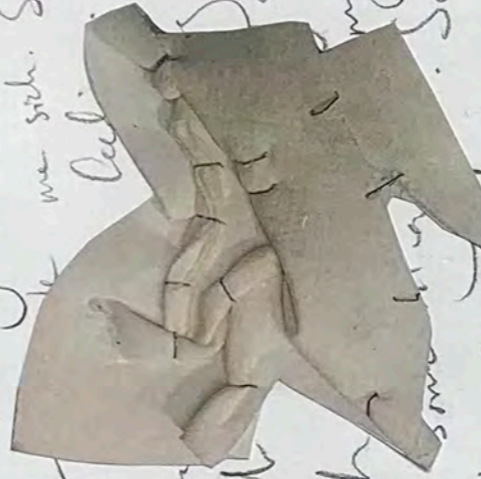
embossed leather



0.5 french  
ext. + nylon  
shibui



really. But I



them

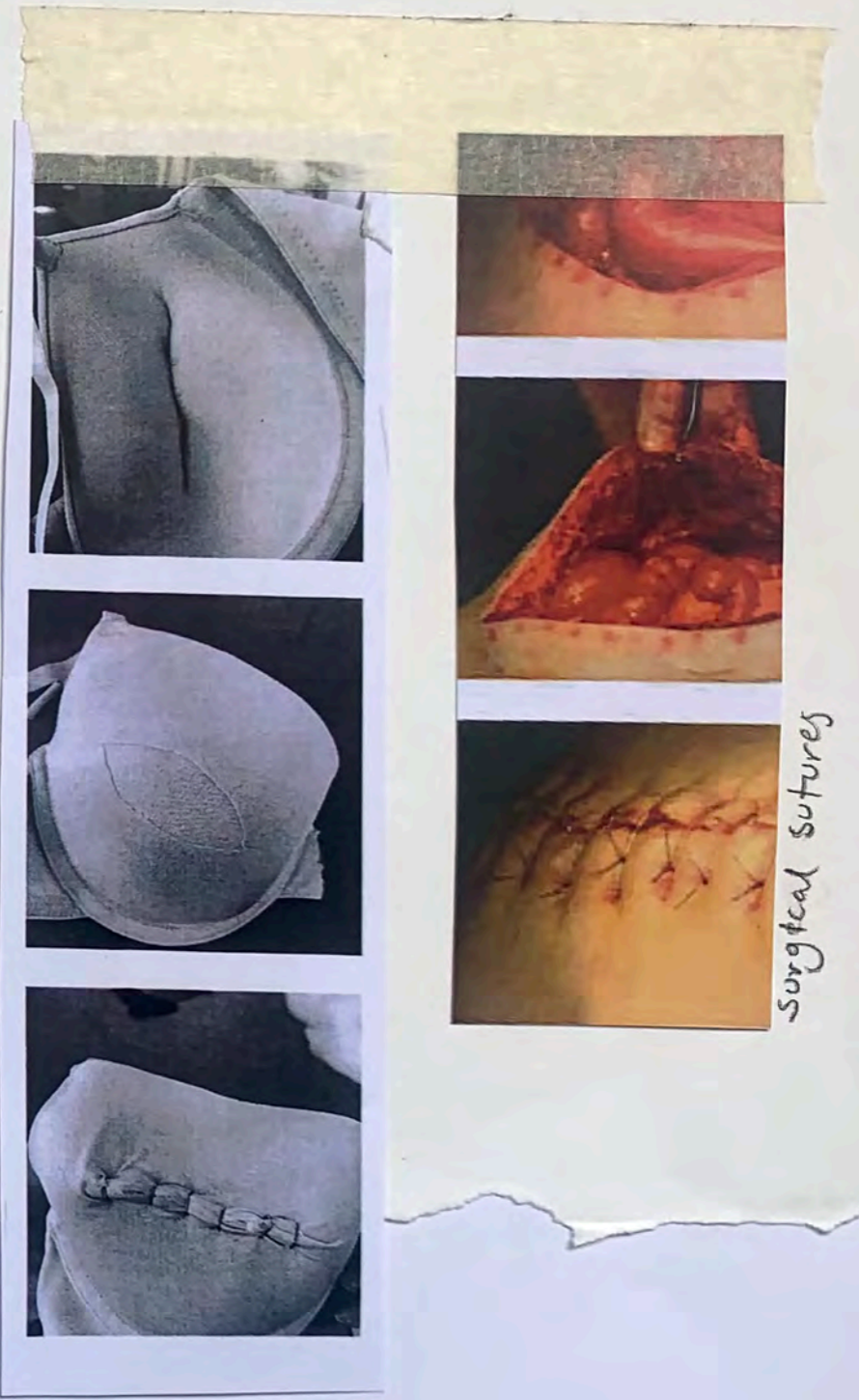
me side. Sometimes I

I know I

can't speak, I wrote it down  
I think it. Then I get  
That calling feeling. And  
I don't know what I'm calling  
into this but its terrifying. As  
myself. I am not my body, or my  
something other. Apparently its normal.  
It doesn't feel normal. It feels like  
experienced this before and I am alone and  
help. I have something to say, but I can't find  
the words, would you PLEASE LISTEN.

- slice
- open | close
- gather
- join
- fix

# TEXTILE DEV.



Surgical sutures

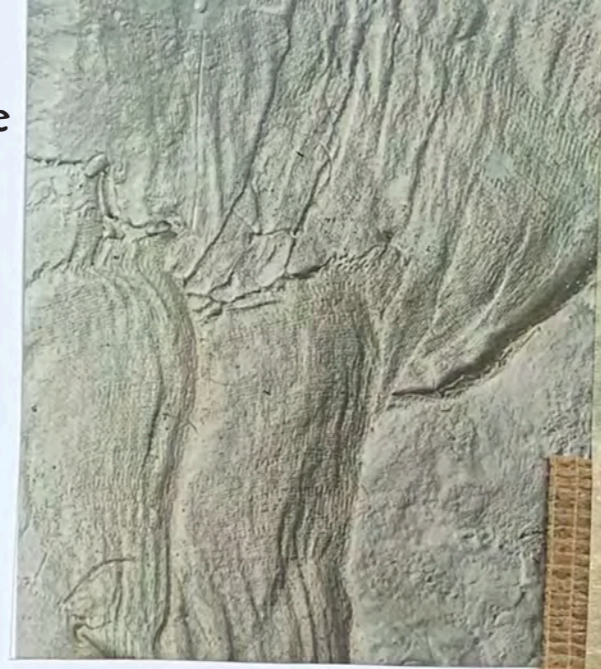
Surgical staples, sutures, and scarring are visual representations of healing.



solid | fragile

cracked

imprint



TEXTILE DEV.



skin cells



plaster embedded oribolacks

Me sampling combinations



own grape-skin textile.

delicate

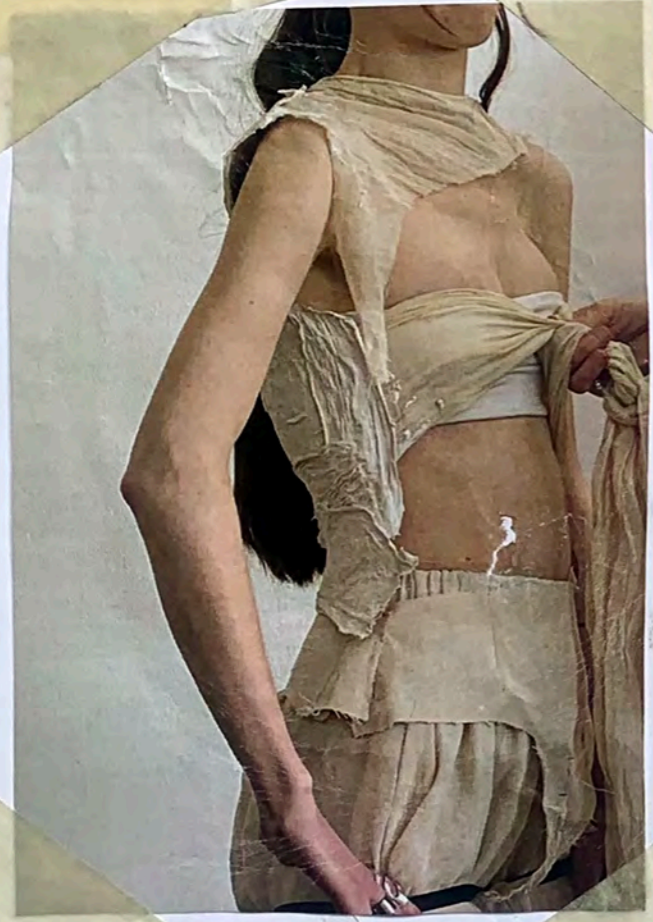
grotesque

living | lifeless

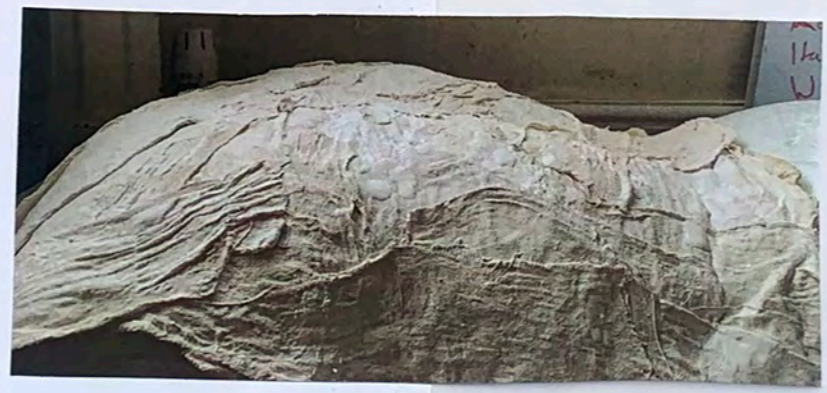
# LOOK DEVELOPMENT 1



1st toile



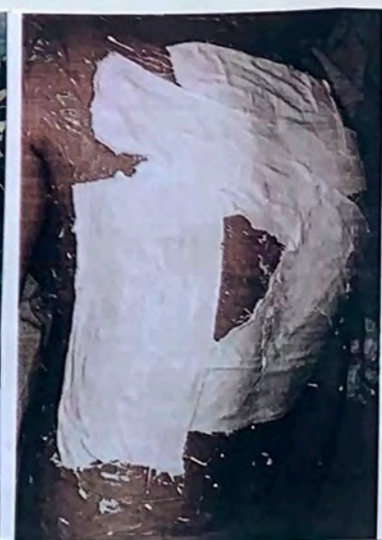
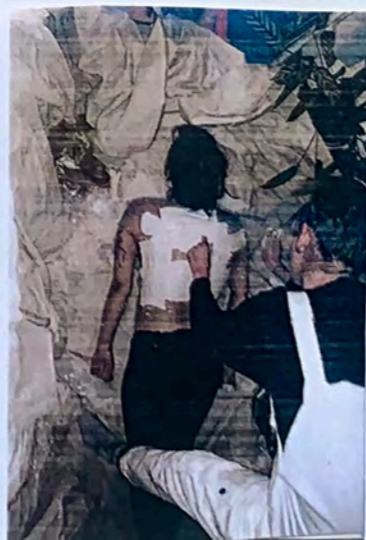
2nd toile



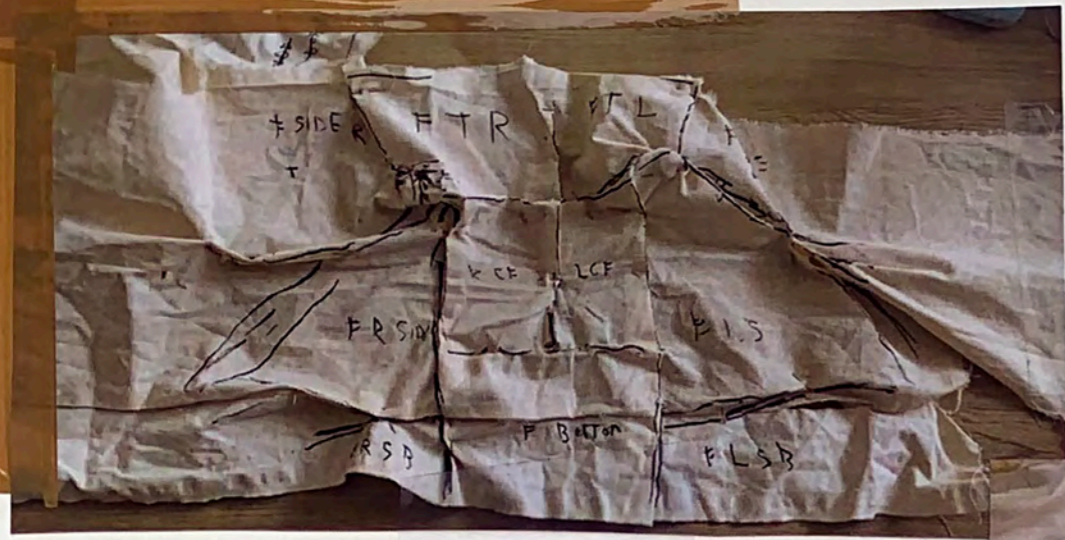
Valentino



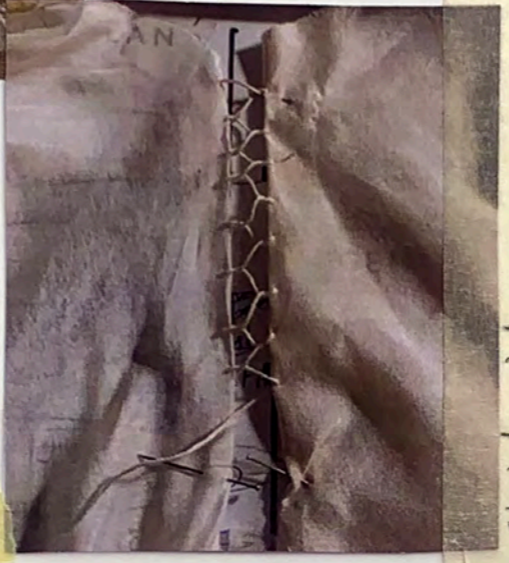
manipulated shoulder cast



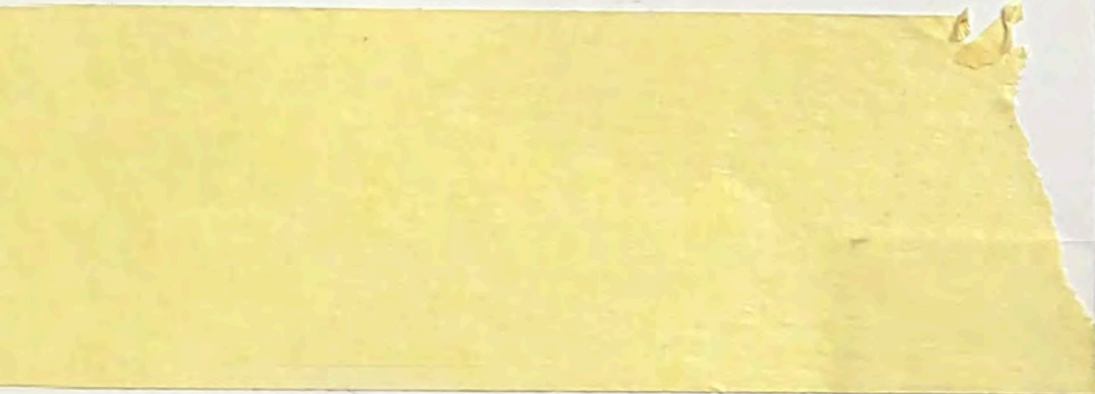
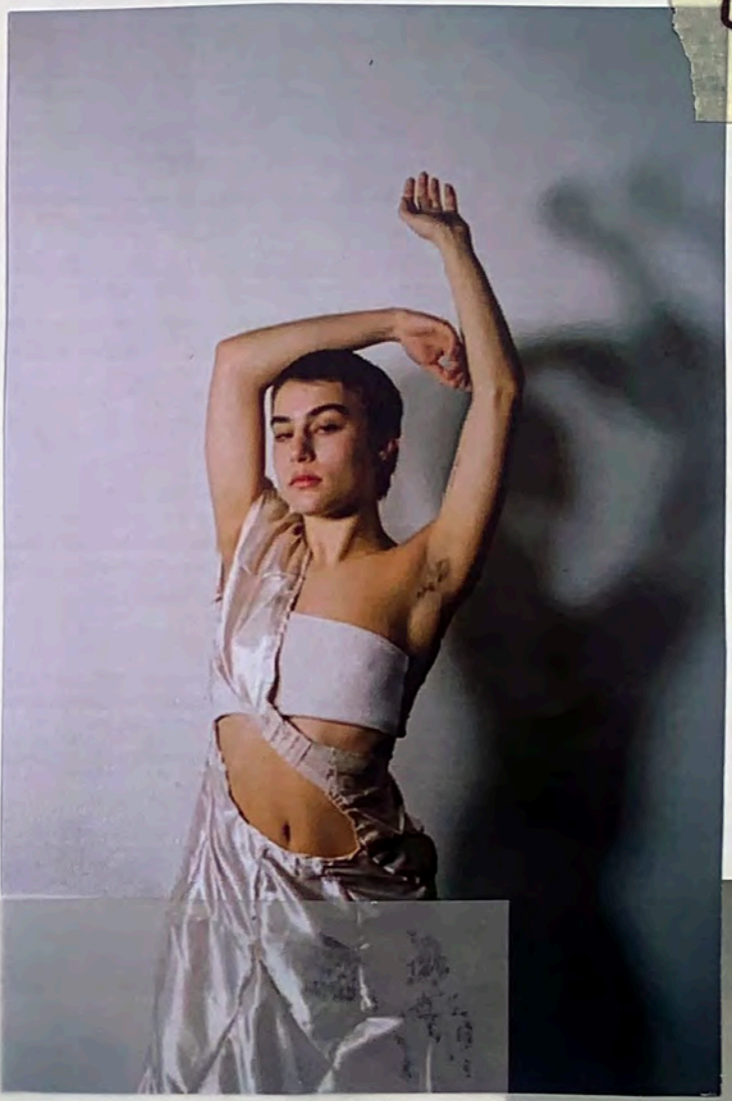
Final piece process



Pattern cut from torso



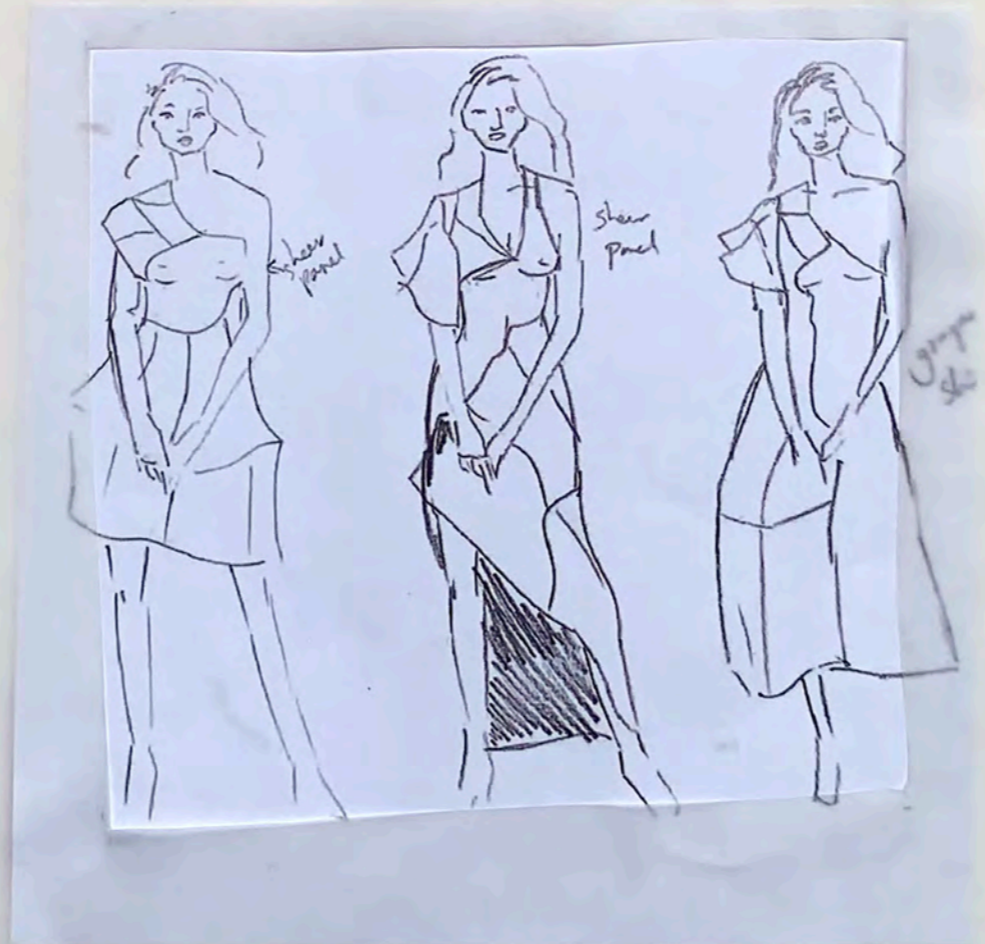
Stitch detail



1st drape



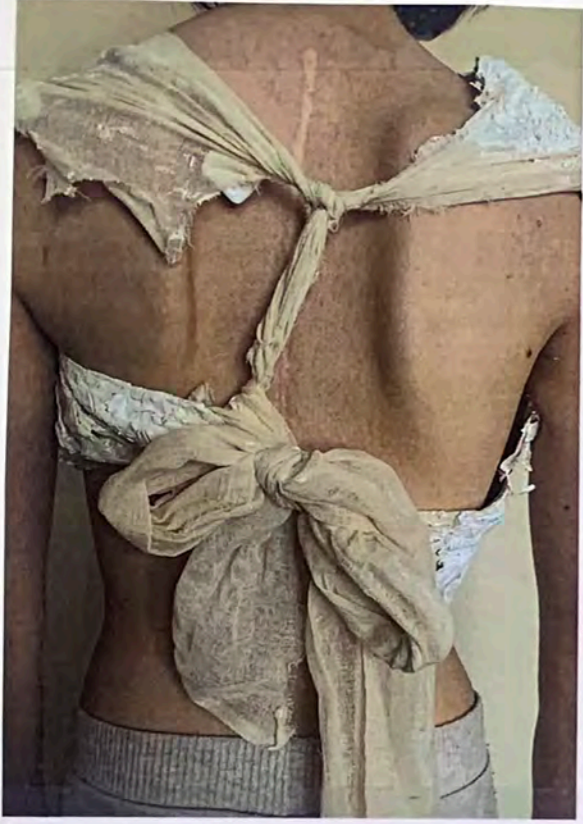
early drape



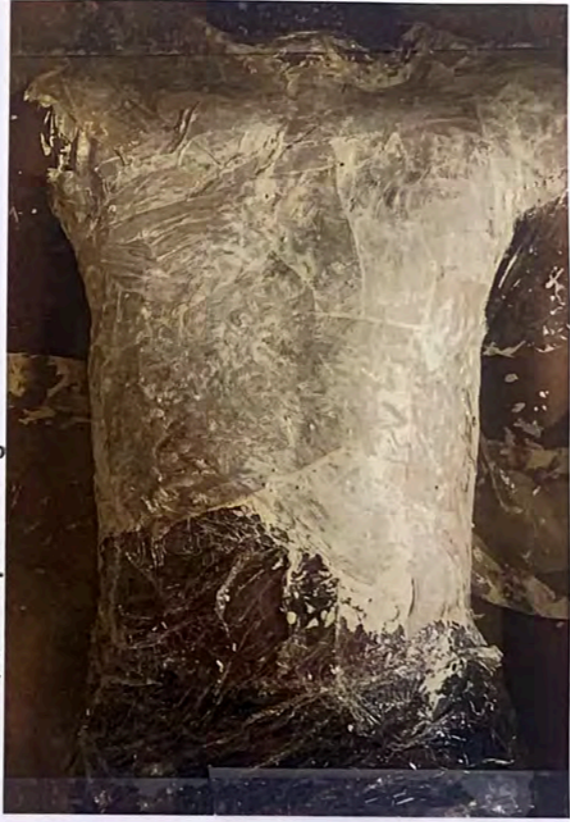
tail photographed by Row Gray Deakin.



1st toile



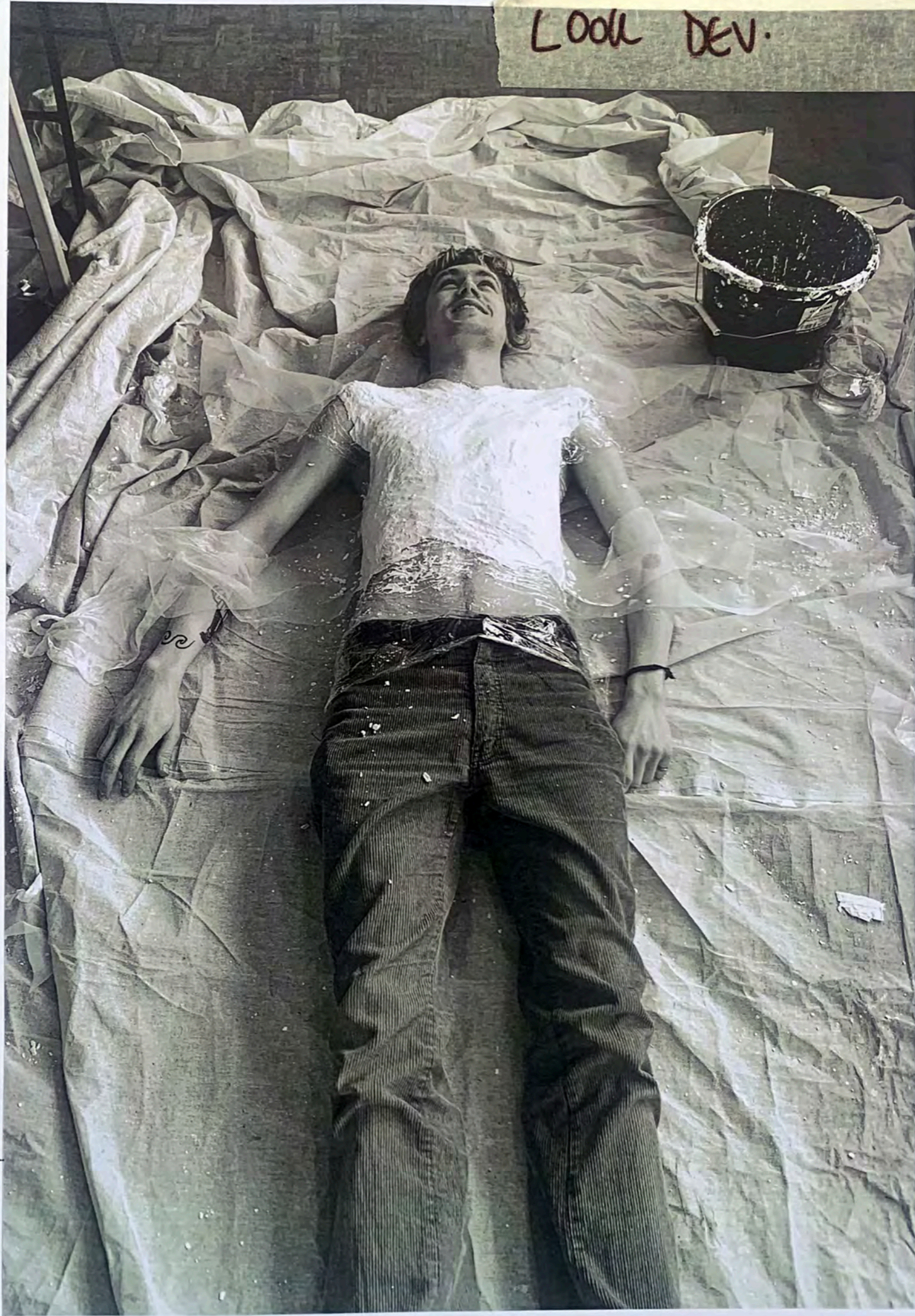
2nd toile process



2nd toile



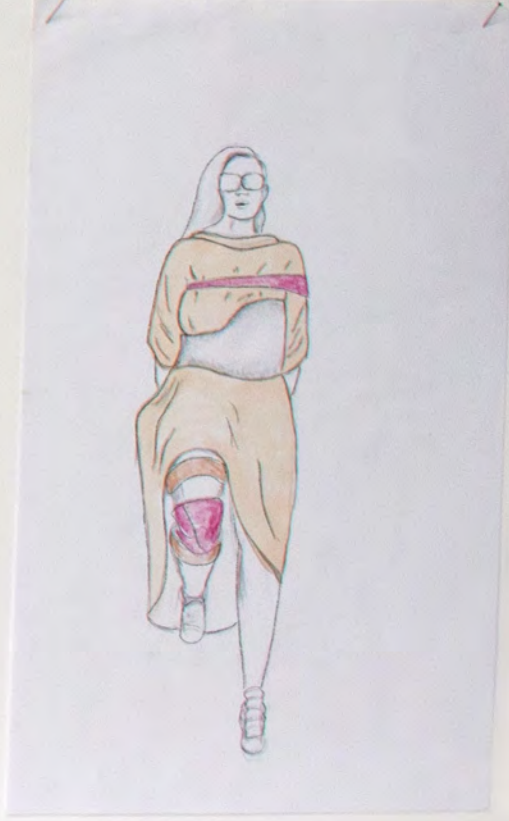
Final cast process

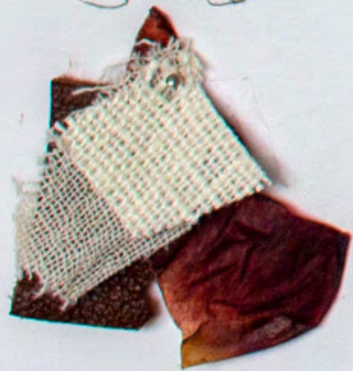


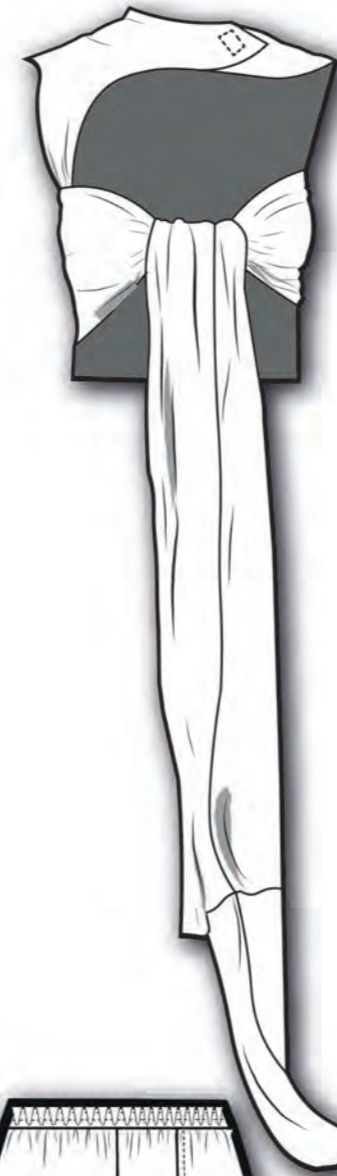
LOOK DEV.

4

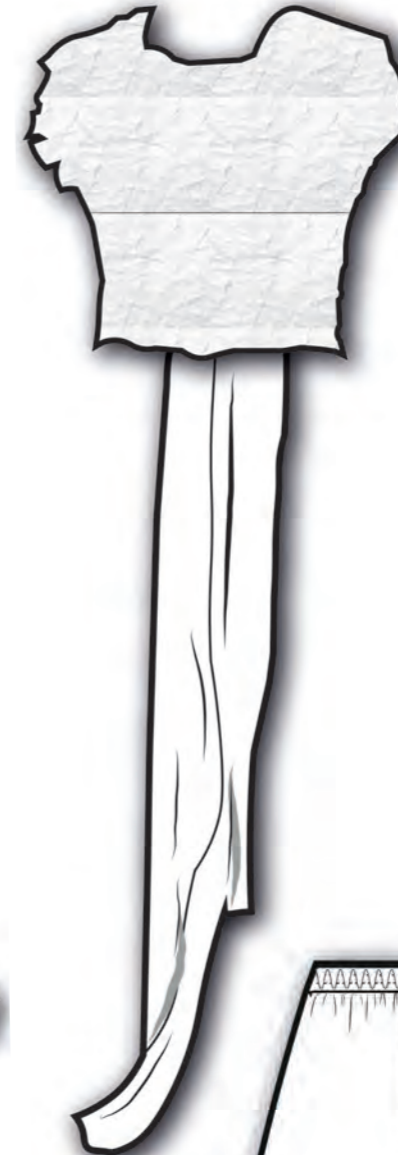
# DESIGN



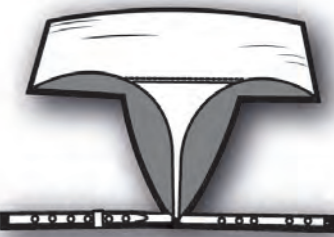
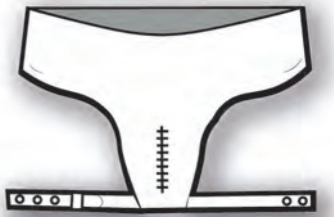




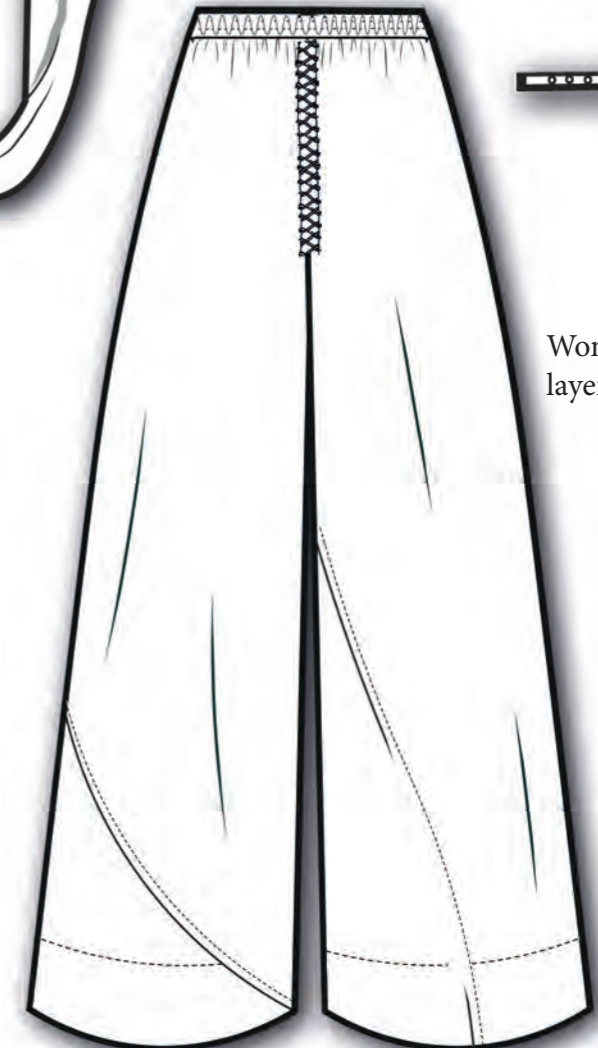
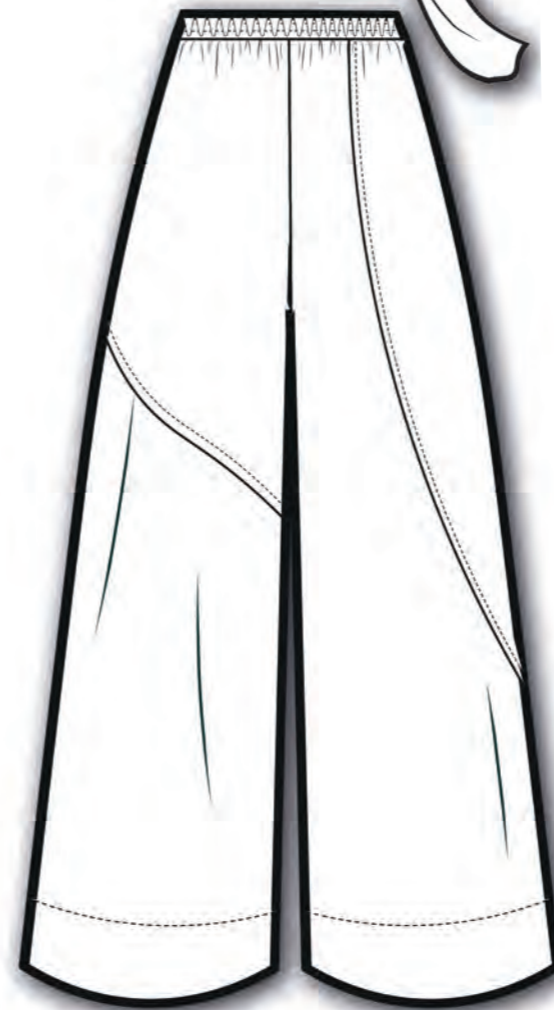
Women's back cast with muslin ties



Women's leather jock



Women's muslin double layer trousers





Men's staple coat



Men's silk slip dress

