

Femme Fatale

noun

An attractive woman, esp one who disastrously involves a man in a crime. Synonyms: temptress, seductress, etc....





Smoking



Shot



Playing with fire



ALLUMEUSE:

(CF: A TEASE)

A girl who looks good and knows guys want her but only plays with their mind. She runs in your mind all day long, a dangerous woman who won't let you go far. Uses sex appeal to manipulate poor helpless men into doing what she wants. May cause death.

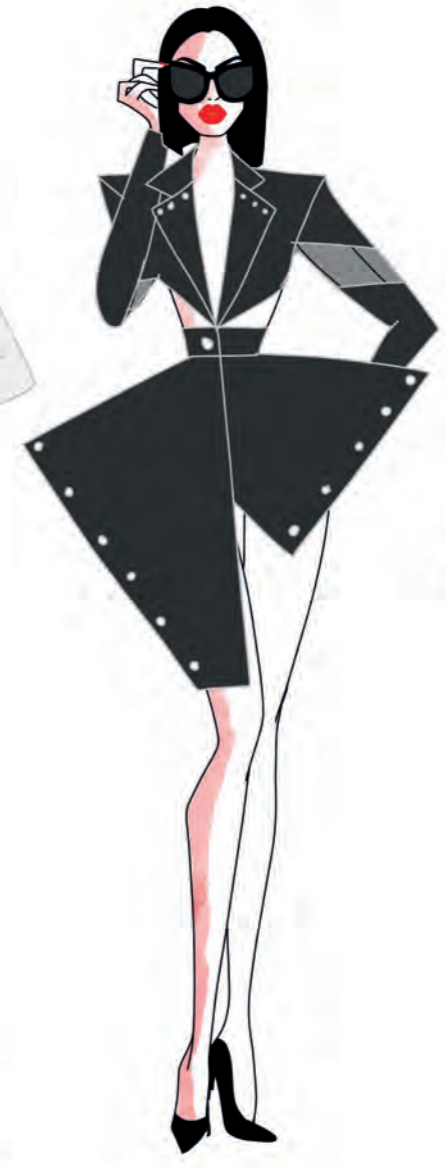
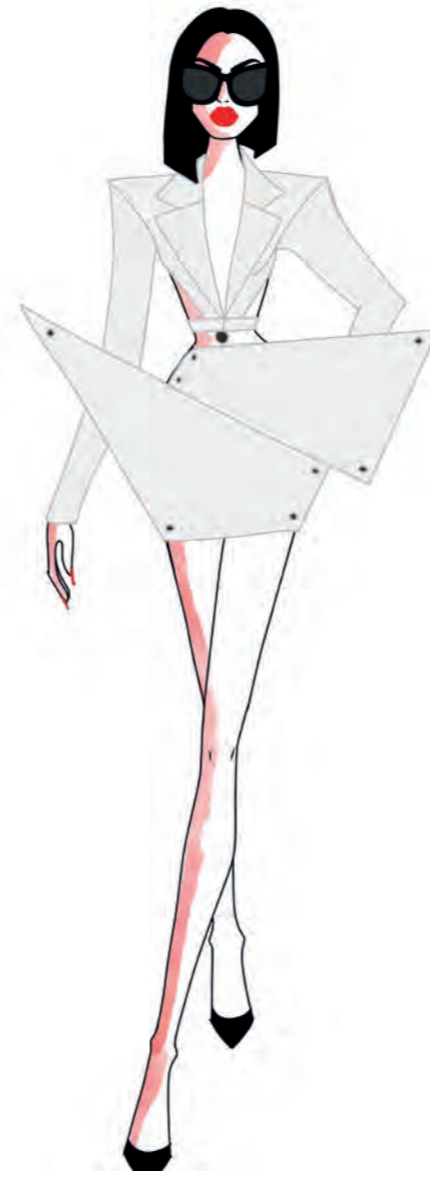


Allumouse



Gun anatomy

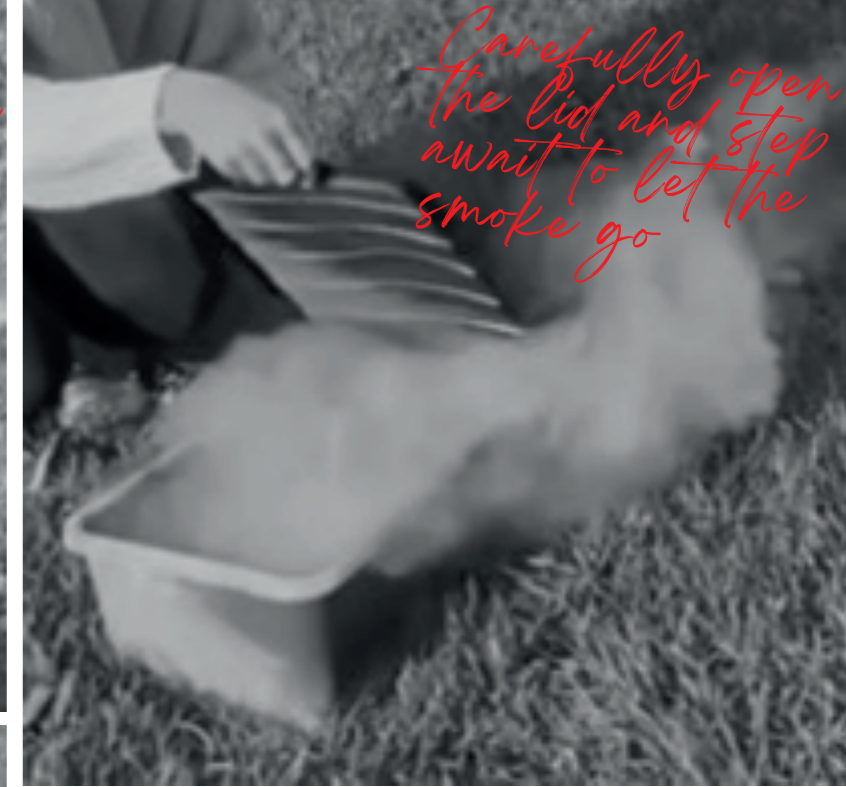
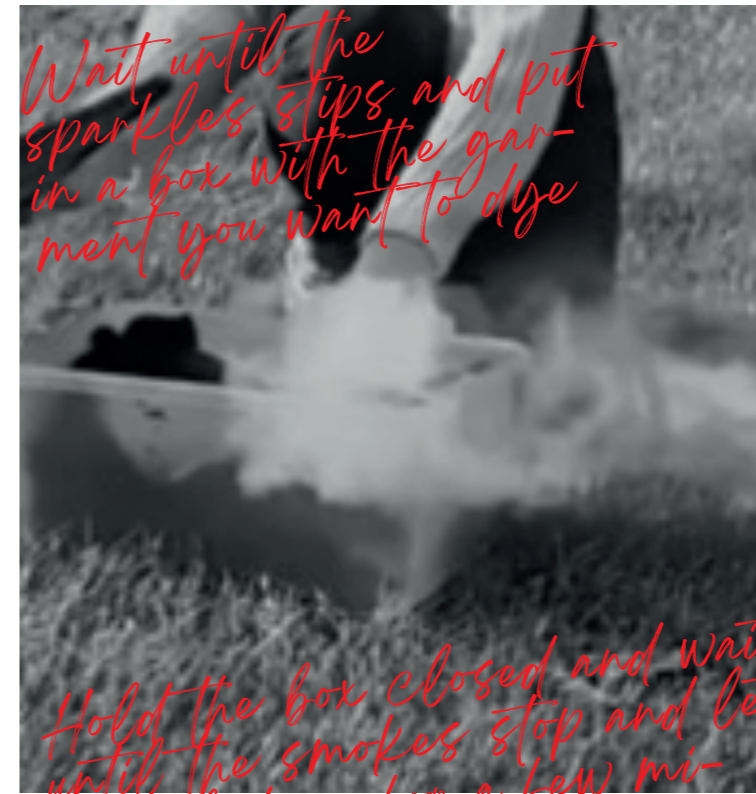
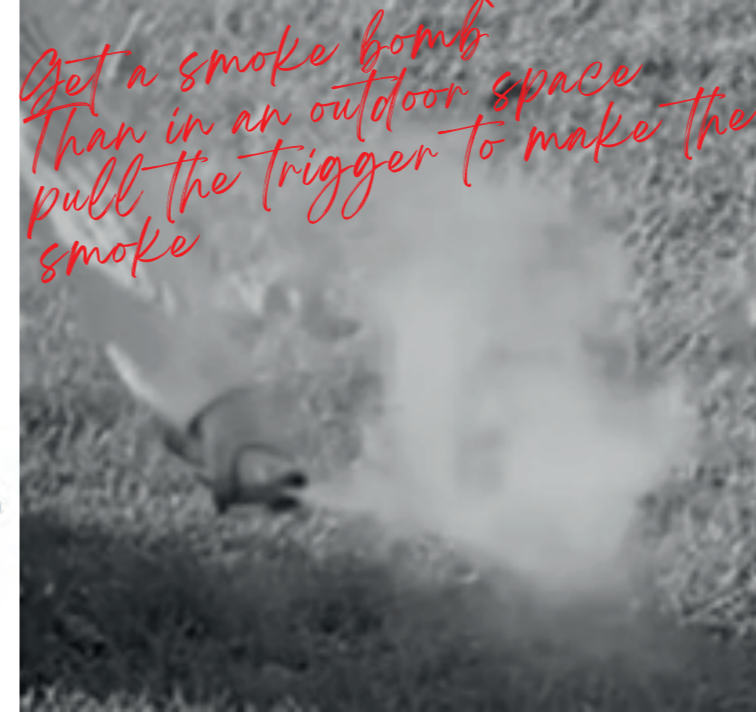
Shape Research



Shot Jacket



Smoking Suit



Get a smoke bomb
than in an outdoor space
pull the trigger to make the
smoke

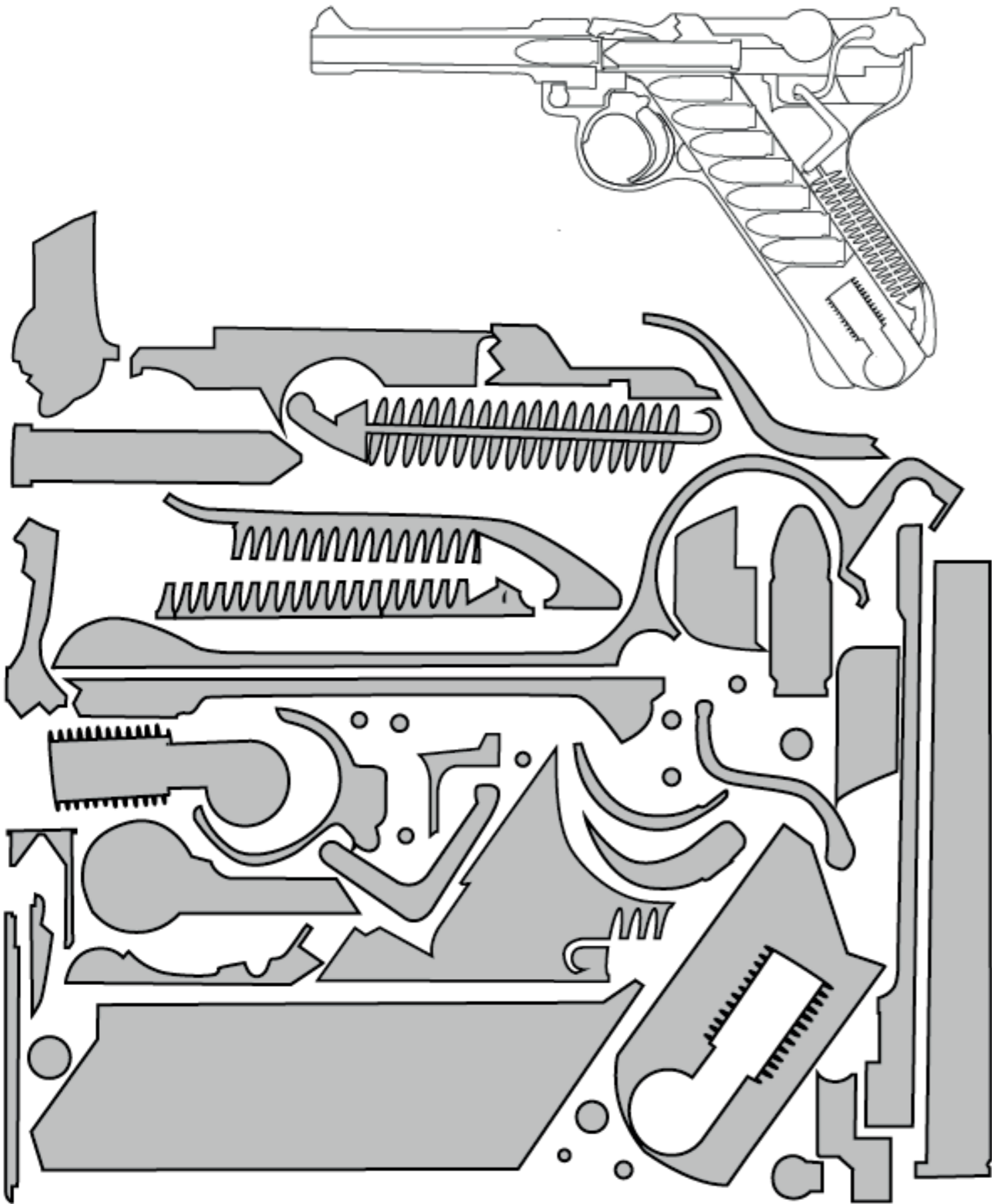
Wait until the
sparkles stop and put
in a box with the gar-
ment you want to dye

Hold the box closed and wait
until the smokes stop and let
it cool down for a few mi-
nutes

Carefully open
the lid and step
away to let the
smoke go

Finally take off the
clothe from the box

Gun gown



"ALLUMEUSE"
Final line-up



Shot
LOOK 1

WOOL TAILORED
JACKET



Drag
LOOK 2

SATIN AND WOOL
TAILORED JACKET
GOWN



Fatale
LOOK 3

WOOL TAILORED
JACKET AND
TROUSERS LEGS



Smoking
LOOK 4

WOOL BLAZER INSPIRED
TOP WITH TAILORED
TROUSERS



Gun
LOOK 5

TULLE AND PATENT
GOWN



Melted
LOOK 6

MELTED PLASTIC
JACKET DRESS

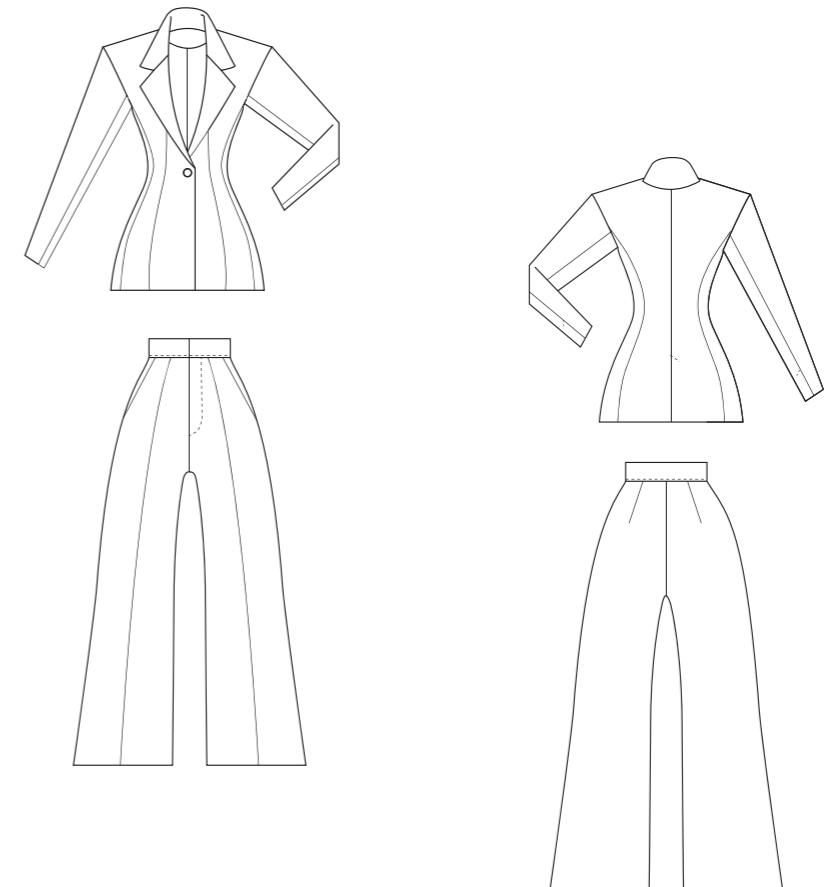




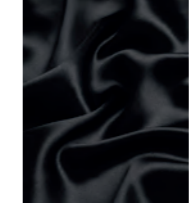



TECH PACK
Dossier technique

LOOK 4
Smoking

COLLECTION	2023	STYLE		Suit jacket	
		COLOUR Couleur	Black / Noir	SUPPLIER Fournisseur	Misan
PRIMARY FABRIC/ <i>Tissu principal</i>	Black Suiting wool / <i>Laine tailleur noire</i>	COLOUR	Black / Noir	SUPPLIER	Minerva
SECONDARY FABRIC/ <i>Tissu complémentaire</i>	Polyester silk satin / <i>Satin de soie polyester</i>	COLOUR	Black / Noir	SUPPLIER	Sewing centre
TRIM / HARDWARE / <i>Fournitures</i>	Button / <i>Boutton</i> Shoulderpads / <i>Epaulettes</i> Zip / <i>Fermeture a glissière</i> Hooks & bars / <i>Crochets</i>	COLOUR	Black / Noir	SUPPLIER	Sewing centre
THREAD(S) / <i>Fil(s)</i>	Gutterman 120 polyester	COLOUR	Black / Noir	SUPPLIER	Sewing centre



PRIMARY FABRIC <i>(Tissu principal)</i>	EMBELLISHMENT <i>(Embellissement)</i>	LINING <i>(Doublure)</i>	TRIM / HARDWARE <i>(Fourniture)</i>
			





ALLUMEUSE
Accessory line

Shoes



Pistolet

Black patent stiletto.
Silver stainless steel gun-shaped heel.



Obstacle

Black patent stiletto.
Silver stainless steel barbed wire heel.



Enchainé

Black patent stiletto.
Silver stainless steel handcuff and chain attached to the back ankle and outer sides.



Craquante

Black patent stiletto.
Silver molten metal covering the shoe.



Enchainé

Black patent stiletto.
Silver stainless steel gun-shaped heel and ankle chain.



Pouvoir

Black patent stiletto.
Silver molten metal covering the heel.