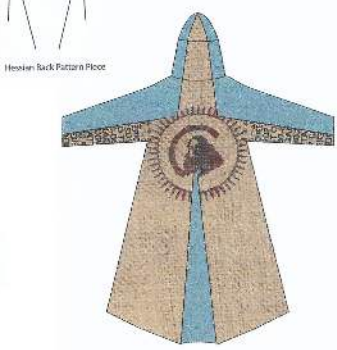
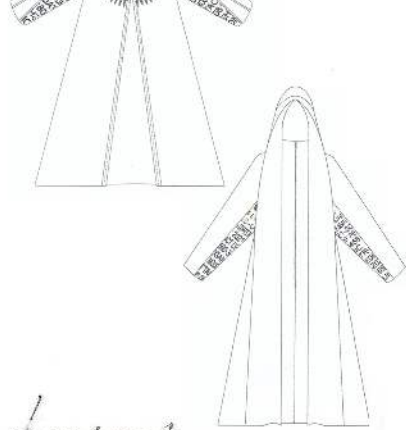


GREEN WAXED COTTON, HESSIAN, TEAL RIPSTOP, OLIVE GREEN RIPSTOP, WHITE RIPSTOP, PARACHUTE JUMP STRINGS

These 3 graphics will be the main ones!



Raw material



Panneling with Hessman

Contrast fabrics

LOOK 1 DESIGN DEVELOPMENT



Silhouette is good but could be more flared

hood part needs to be more turned up
asymetric hood



Sleeves could have better pattern

Trousers need to be changed

hood works but not outer garment



large hood forming onto lapels



Silhouette



Hooders & hood combination works

in green?

like this look but too similar to look 2



too heavy

length too long & sleeves not right

look 1
Coat Design

Option 1 →
Two types
of green
topstop:
Heavy weight
grass green
light weight
olive green.

Option 3
two shades
of nylon:
light green
& off grey

Final fabric
options:
→ Hessian with
heavy weight
topstop: shade
Deep green



Option 2
Same weight
topstop -
navy blue &
dark grey
(looks cheap)

Option 4
grey light
weight cotton
& light green
canvas.

X
↓ could
combine?



Option 5
light weight
topstop
to show
graphics of
hessian:
(easier to use)

LOOK 2 DESIGN DEVELOPMENT





LOOK 2 TROUSER DEVELOPMENT



Messian gotta paired with Messian chaps

one single Messian panel

Whole of the back of the trouser - Messian



chop like lower leg panel

Two inside panels paired with green knitted layer Messian

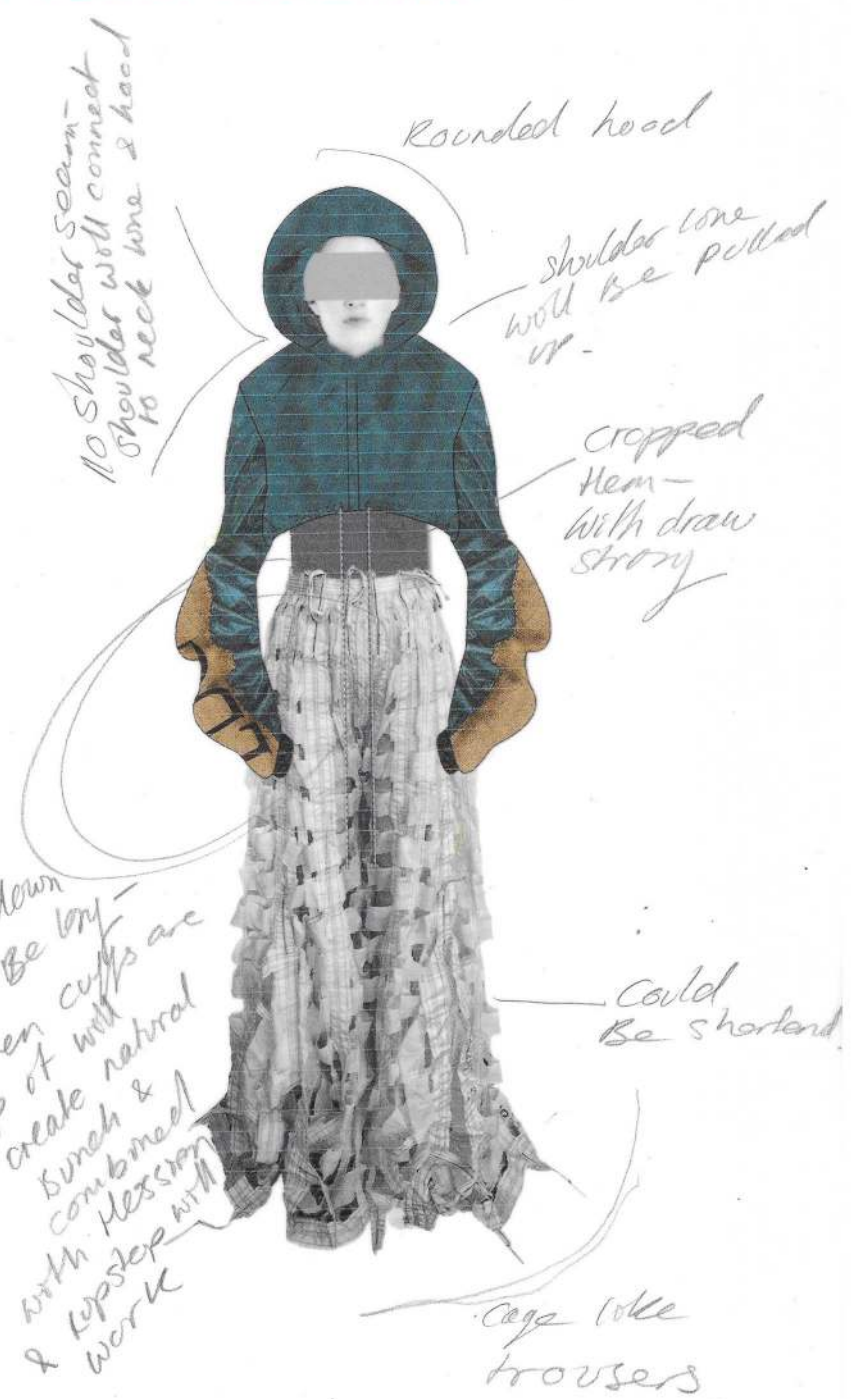
Messian yolk

long strip down side of the leg

LOOK 3 DESIGN DEVELOPMENT



Trousers work - top needs rethinking









STYLE: HOODED HESSIAN COAT	Look 1
FABRIC 1: GREEN WAXED COTTON	
FABRIC 2: HESSIAN COFFEE SACKS	
TRIMS: GOLD ZIP	
DESIGNER	OONA KERR
OTHER:	

