

PENGUIN  CLASSICS

ÉMILE ZOLA

NANA

TRANSLATED BY GEORGE HOLDEN

Nana is an evocation of the glittering, corrupt world of the Second French Empire, where prostitution played an important part at all levels.

Prompted by his theories of heredity and environment, Zola set out to show Nana, 'the golden fly', rising out of the underworld to feed on society – a predetermined product of her origins. Nana's latent destructiveness is mirrored in the Empire's, and they reflect each other's disintegration and final collapse in 1870.

built around the book's scientific skeleton is a powerful, visual effect, and a rich use of words which elevate the realistic platform into a tale of desires.

Edward Manet, in the Paris of the 1870s, Hamburg

Literary

U.K.
CAN. \$7.95
U.S.A. \$6.95

91801



92632

PENGUIN  CLASSICS

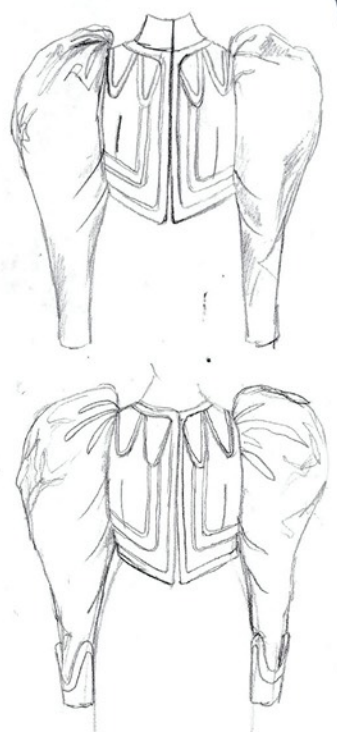
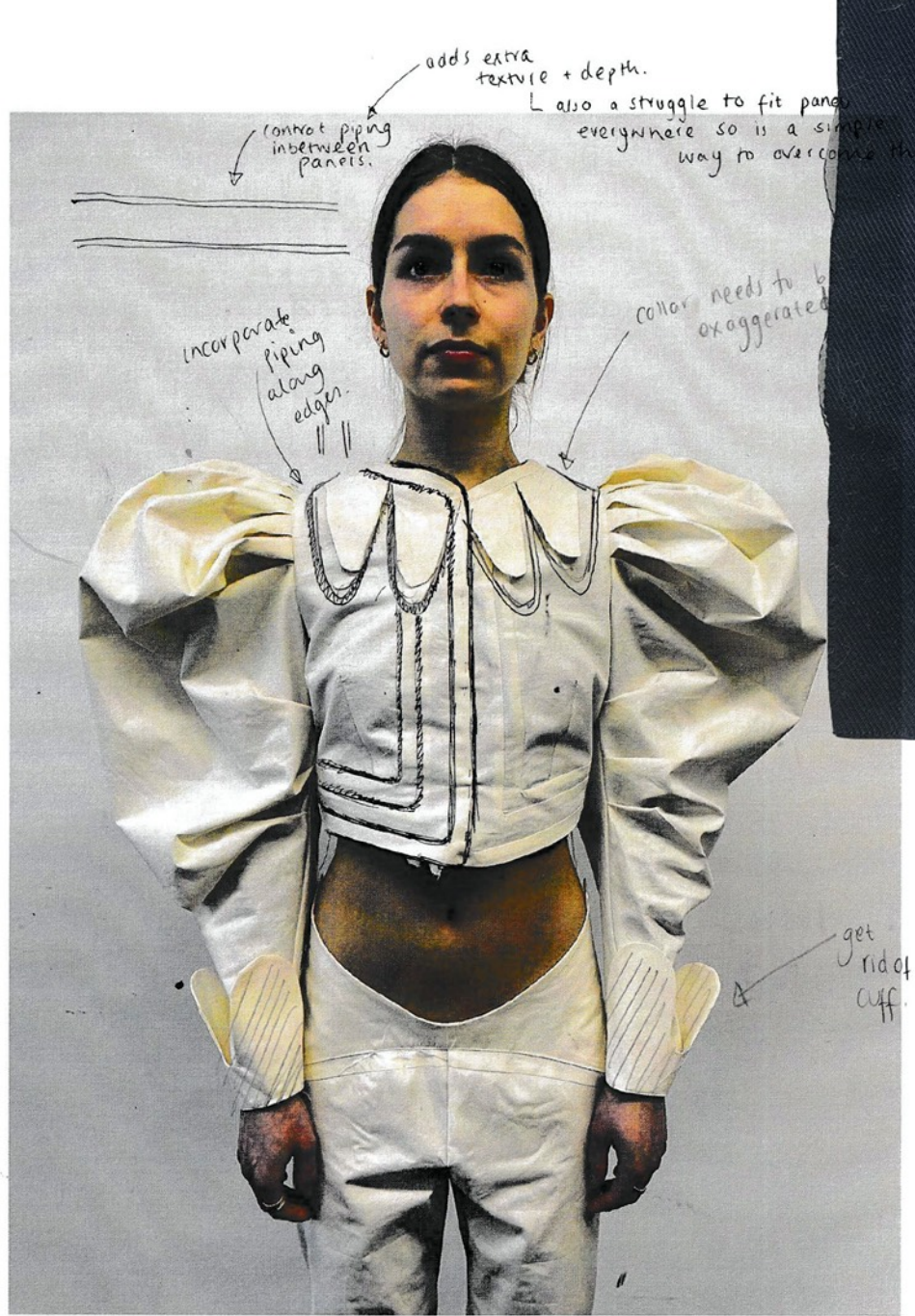
ÉMILE ZOLA

NANA











Sleeve comparison
LEFT > RIGHT
- arm hole is also newer neckline

KL

BACK

AM
PETITE

AM
PETITE





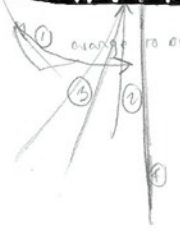


maybe add to the top.



add more volume

pull in



- ① orange to oo
- ② pull purple up to purple
- ③ pull green to green.
- ④ right blue is CB extra.

- ① extend CF with added for button stand.
 - ② add seam allowance
 - ③ put back piece on fold.
 - ④ extend the bottom of
- Split into 3 pieces
- ① Front - back.
 - ② Back
 - ③ skirt drape.











