

Awaiting the start of the 1951 French Grand Prix, a packed field is headed by the Alfa Romeo 159s of Juan Manuel Fangio and Giuseppe Farina, along with the Ferrari 375 of Alberto Ascari.



REIMS - GUEUX 1997

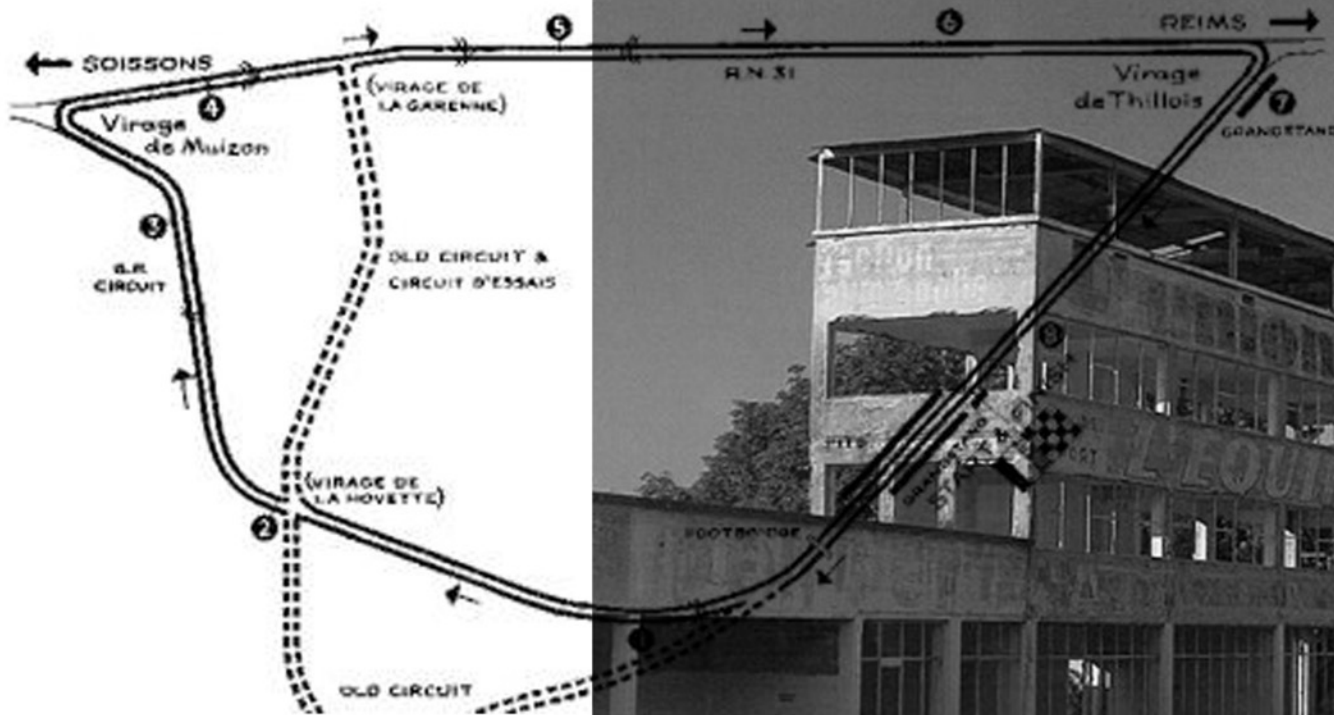
LUCY CLAYDON-SMITH

and shops onto another minor road, the CD26, for a 2km (1.24 mile) gentle uphill run to La Garene corner. Here, the track joined Route Nationale 31, a much more significant road which served Reims rather than outlying villages. The RN31 formed the main straight, sloping gently downhill to the right-handed Thillois Hairpin which led the circuit back onto the CD27, the

Grand Prix. The circuit had truly arrived on the international scene, where it remained until closure decades later. The 'Flying Mantuan' Tazio Nuvolari won that first Grand Prix, driving the superb Vittorio Jano-designed Alfa Romeo P3. The race ran for a gruelling 461 miles (742km) at an average speed of 148.5kph (92.27mph); for a road course mainly consisting of long straights

F France

REIMS



The village of Gueux is a quiet, delicate little place. Between a pond in the centre of the village and the front of the church the name of the village is spelt out in a topiary bush. This gentle corner of France in the heart of the Champagne province couldn't be nicer if it tried.

However, about a kilometre to the west of the village there's a dark brooding presence keeping watch over the main road into the village. Faded advertising for local champagne houses peels away as unconcerned motorists sweep past, a few, perhaps, wondering what these deserted grandstands await.

It was once one of the world's great circuits, hosting world championship Grands Prix and top level sportscar races. The track was fast, very fast, made up of public roads on the edge of the village. A track on which both the Silver Arrows and Sharknose Ferraris ran now lies rotting and abandoned. The Circuit de Gueux – more often known as simply Reims or Reims-Gueux – stands as a reminder of those halcyon days of Formula

REIMS-GUEUX 1997

One motor race names which made it is. Many millions place with the same circuits, such as Nordschleife, legends were

The track (the French Grand Prix), and the winner driving in his first world championship by time a Formula One world champion won by a newcomer. The car had a legendary: the 1961 Ferrari 156 Dino V6 powered machine with such eye-catching sharknose. It became known simply as 'the Sharknose' and remains a sight to this day.

On the circuit de Gueux sprang into life for both cars and bikes. Winner of the Grand Prix de la Marne was Pierre Cloarec in an average speed of 102kph in the 12 heure de Gueux sports car race. It was a popular fixture on the international motorsport calendar. During the race the sun was already challenged



BILL

delicate little place. Between the church and the front of the church is a topiary bush. This gentle town in the Champagne province couldn't

to the west of the village there's a watch over the main road into the local champagne houses. As the cars sweep past, a few grandstands await. The world's great circuits, host to the top level sportscar and a network of public roads which both the Silverstone and Silverstone are rotting and abandoned. Reims is known as simply Reims of those halcyon days

of Ferrari, of Lotus, and many others. This stretch of Tarmac the hall of motor racing fans worldwide has the reverence as that reserved for the full Spa-Francorchamps, the Silverstone and even Monaco. Reims was a place of legends and myths created.

host to the 1961 French Grand Prix, Enzo Ferrari - was driving in his first and only time a Formula 1 race. The round has been won by a new comer. The race was even more legendary: the 1961 Ferrari beautifully crafted, V6 powered machine with a design that it became known simply as 'the bird' which sticks to this day.

In 1925 the Circuit de Gueux sprang into life for a meeting for both cars and bikes. Winner of the inaugural Grand Prix de la Marne, was Pierre Bignan at an average speed of 102kph. The 12 heure de Gueux sports car race is a very popular fixture on the international calendar. It was run for the first time. During the race the main problem for the already challenged



STITCHING DETAIL

LINEAR DOME SHAPE

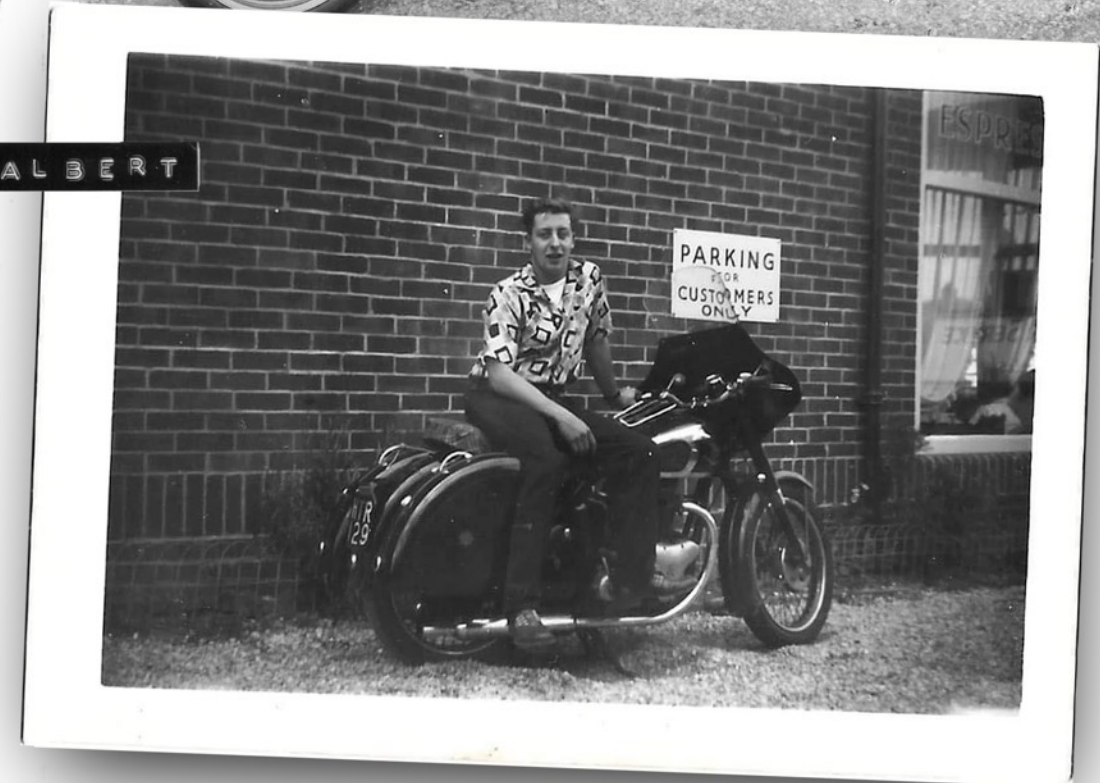
BUCKLE DETAIL, 'PULLING IN THINGS' CREATING SHAPE.



TIM



ARTHUR



ALBERT

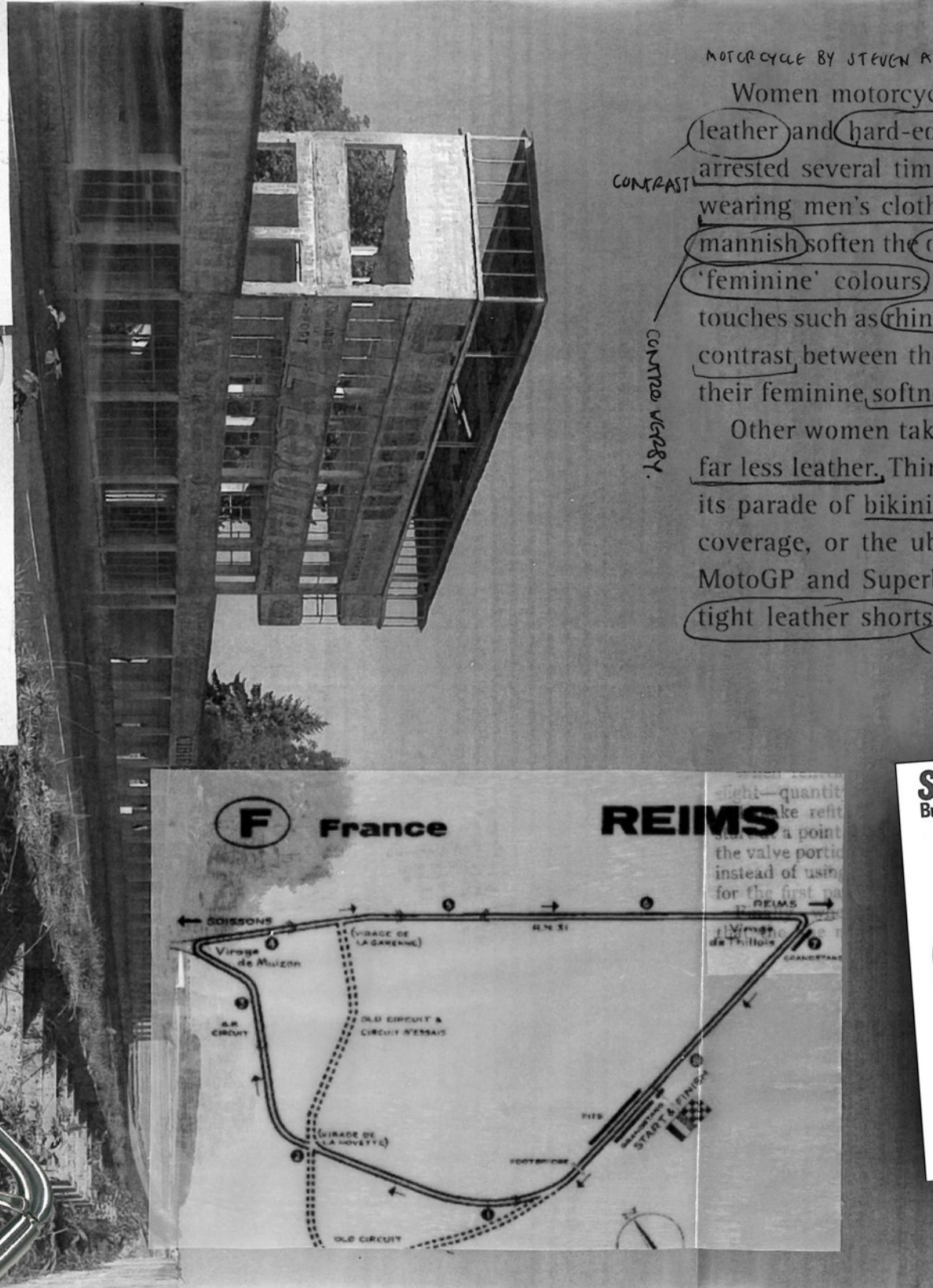
REIMS - GUEUX 1997

LUCY CLAYDON-SMITH

STITCH DETAIL
CREATING NATURAL
GATHERING.



STITCHING
DETAIL -- CULP
APPEARANCE
TRAIL MAP?



MOTORCYCLE BY STEVEN ALFORD + SUZANNE FERRISS (2007)

Women motorcyclists complicate this simple equation between leather and hard-edged masculinity. The Van Buren sisters were arrested several times during their cross-country ride in 1916, for wearing men's clothing. Other women who fear being considered mannish soften the dark ruggedness of the leather by selecting more 'feminine' colours, such as red or pink, or adding decorative touches such as rhinestones or fringe. The jacket then highlights the contrast between the masculine hardness of the leather fabric and their feminine softness.

CONTRAST

CONTRAST VEGARY.

KPP
DETAILS
?

Other women take advantage of this same contrast by wearing far less leather. Think Bike Week in Daytona Beach, Florida, with its parade of bikini-clad women wearing only leather chaps for coverage, or the ubiquitous 'booth babes' or 'umbrella girls' at MotoGP and Superbike events, sporting navel-bearing tops and tight leather shorts. They expose their sexuality not simply by

LEATHER = SEX?

Stadium Helmets
Built-in quality means built-in Safety

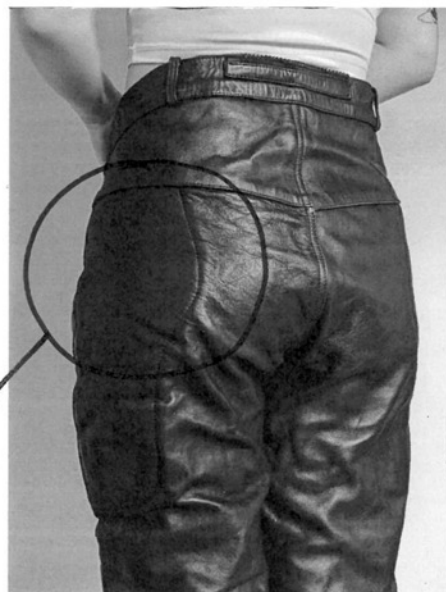


It is easy to see the excellent material and finish of a Stadium helmet. But you need to wear one to appreciate the comfort—then you'll understand why Stadium are Britain's most popular helmets (and there are goggles as well).

Write for free literature of the range of mirrors, helmets, visors and goggles.
STADIUM LTD. 31 QUEENSWAY ENFIELD MDDX



VOGUE ITALIA, SEPTEMBER 1997



BACK IS SEWN IN PANEL.



PLAY AROUND W/ PRODUCING A SWATCH?

COULD BE A RIBBED CHUNNY KNIT?



SIDE PANEL IS WADDLED - EXPERIMENT W/ WADDING?



CAIRE TWOMEY

sexy. exposing flesh but by drawing attention to the contrast between the softness of their bare flesh and the toughness of the leather that partially conceals it. The interplay between leather and flesh adds to their allure.

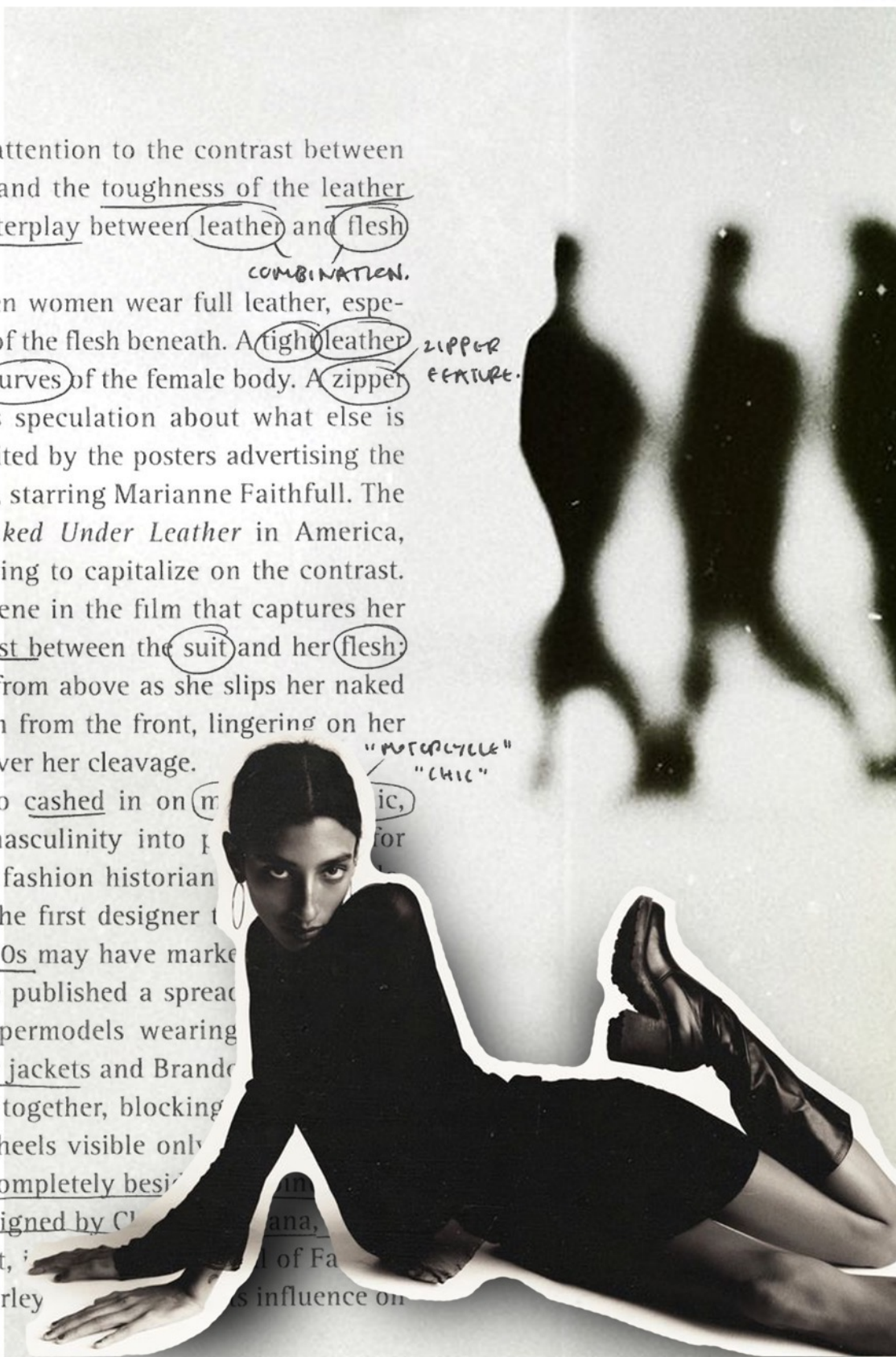
This same contrast works when women wear full leather, especially if there is some suggestion of the flesh beneath. A tight leather suit for instance, highlights the curves of the female body. A zipper open to reveal cleavage invites speculation about what else is hidden, an insight cannily exploited by the posters advertising the film *Girl on a Motorcycle* (1968), starring Marianne Faithfull. The X-rated version was called *Naked Under Leather* in America, Hollywood apparently quite willing to capitalize on the contrast. The poster recreates an early scene in the film that captures her pleasure in exploiting the contrast between the suit and her flesh: the camera focuses on Faithfull from above as she slips her naked body into the suit, then moves in from the front, lingering on her hand as she pulls the zipper up over her cleavage.

The fashion industry has also cashed in on (m) transforming the material of masculinity into a feminine display. According to fashion historian couturier Yves St Laurent was the first designer to be stylish in the 1960s, but the 1990s may have marked the trend when *Vogue* magazine published a spread *Chic* featuring a gaggle of supermodels wearing clunky motorcycle boots, leather jackets and Brandon. In the photo they stand closely together, blocking their faces posed behind them, their wheels visible only in the frame. The motorcycles are completely beside the point. It is the sale of leather clothing designed by Calvin Klein and others. No wonder that, in the 1990s, designers of America credited Harley

COMBINATION.

ZIPPER FEATURE.

"MOTORCYCLE" "CHIC"





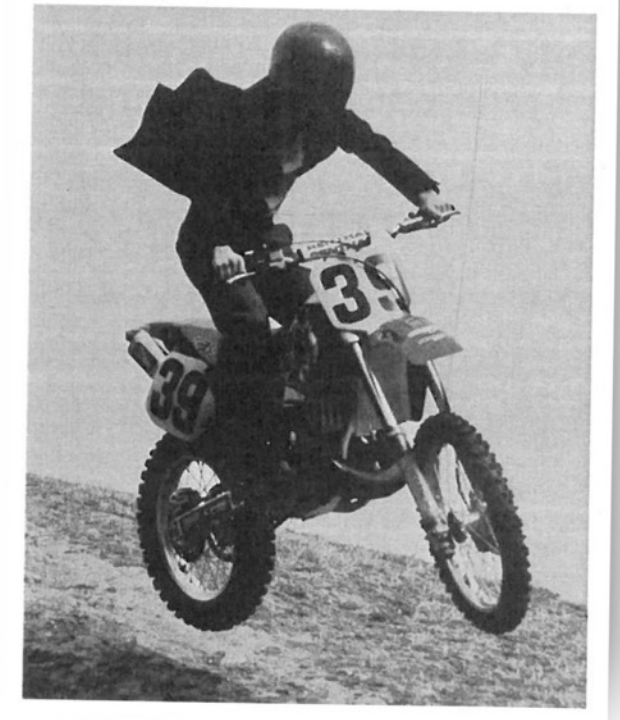
and shops onto another minor road, the CD26 (miles) gentle uphill run to La Garenne corner joined Route Nationale 31, a much more signposted Reims rather than outlying villages. The main straight, sloping gently downhill to the Th'lois, which led the circuit back onto the

Awaiting the start of the 1951 French Grand Prix, Giuseppe Farina



STITCHING DETAIL
LINEAR
DOME
SHAPE

•BUCKLE
DETAIL,
'PULLING IN
THINGS'
CREATING
SHAPE



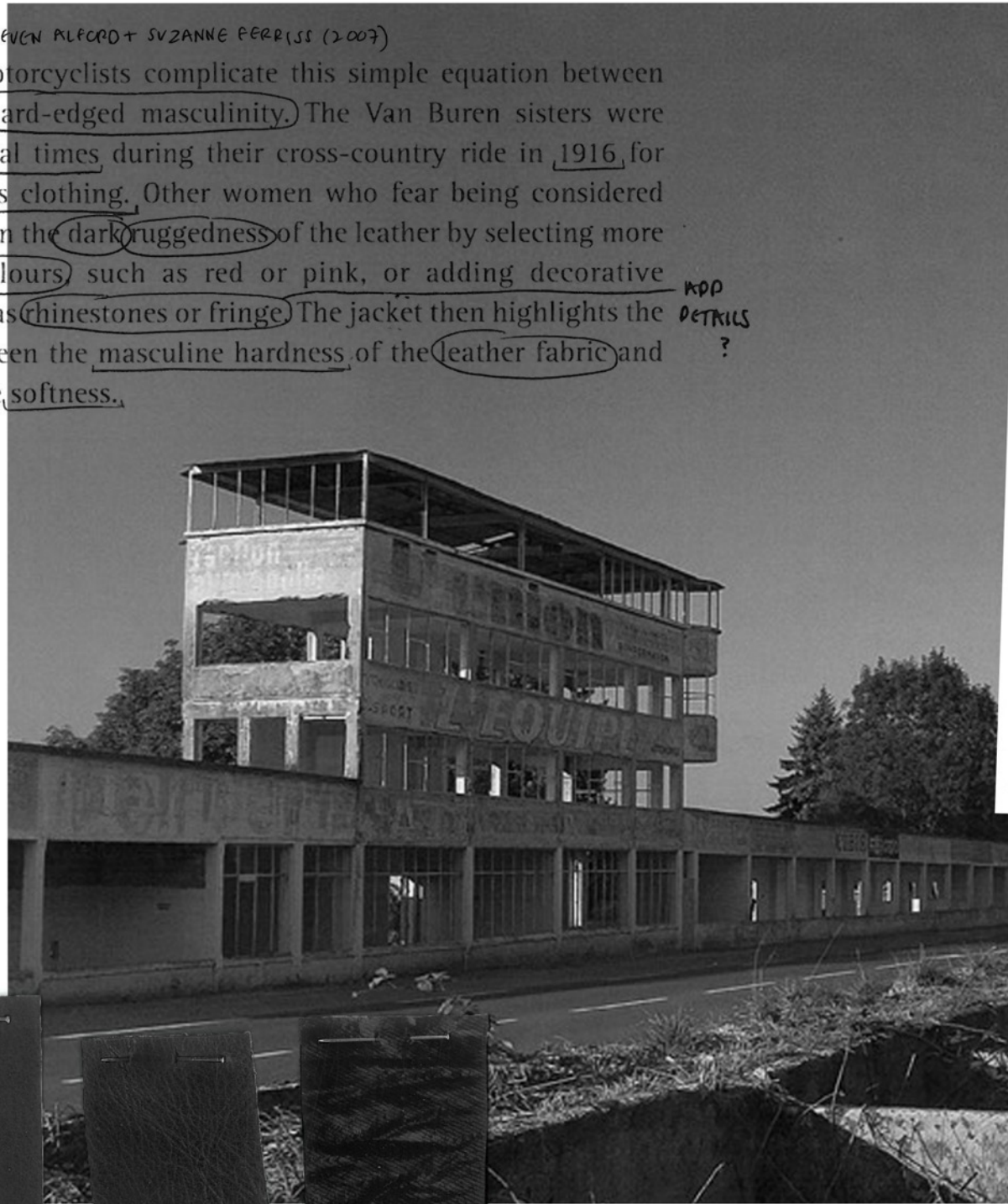
PAF SIMONS, 1997

MOTORCYCLE BY STEVEN ALFORD + SUZANNE FERRISS (2007)

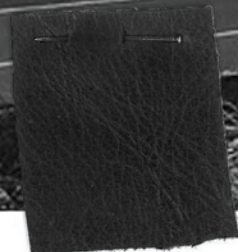
Women motorcyclists complicate this simple equation between leather and hard-edged masculinity. The Van Buren sisters were arrested several times during their cross-country ride in 1916 for wearing men's clothing. Other women who fear being considered mannish soften the dark ruggedness of the leather by selecting more 'feminine' colours such as red or pink, or adding decorative touches such as chinestones or fringe. The jacket then highlights the contrast between the masculine hardness of the leather fabric and their feminine softness.

CONTRAST
CONTROL VIBRANT.

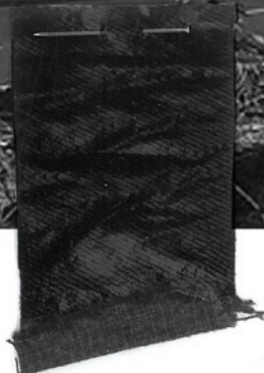
KPP
DETRAILS
?



HEAVY PRVY
LEATHER
MINERVA
\$12.99 P/M

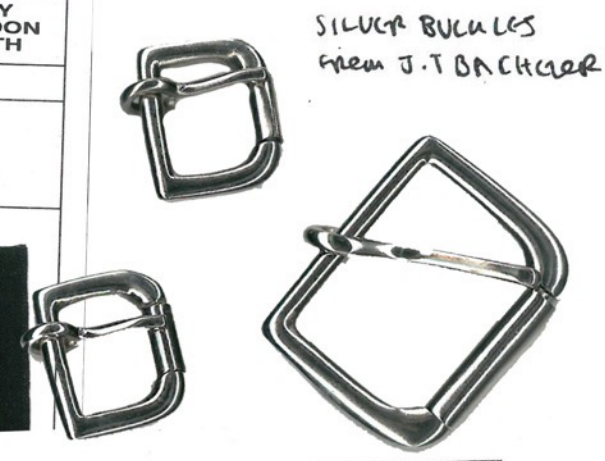


SOFT
BLACK
LEATHER
J.T BACHELORS?



PU PATENT LEATHER
MINERVA
\$19.18 P/M

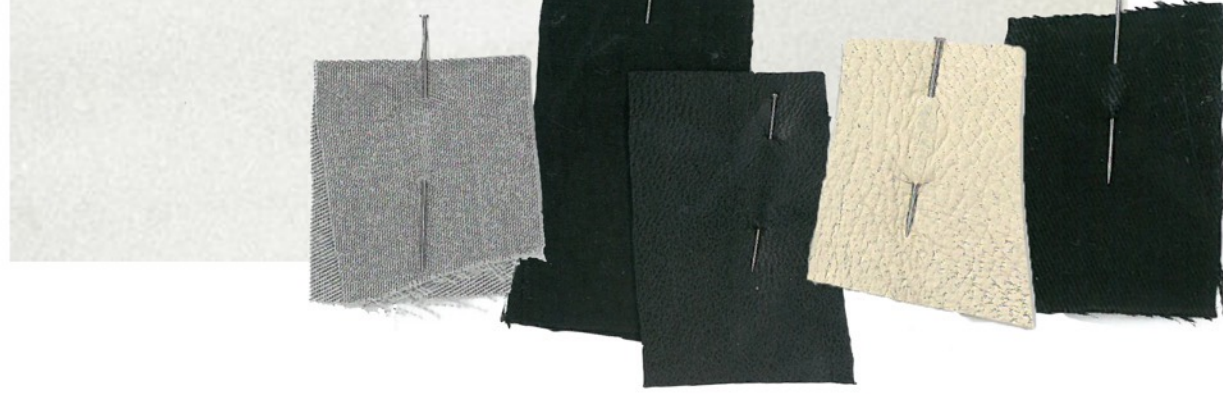
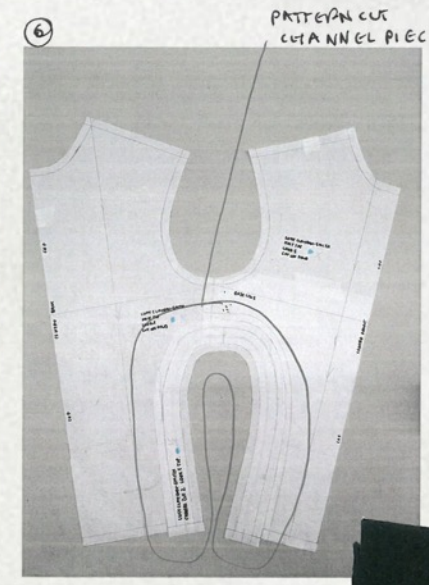
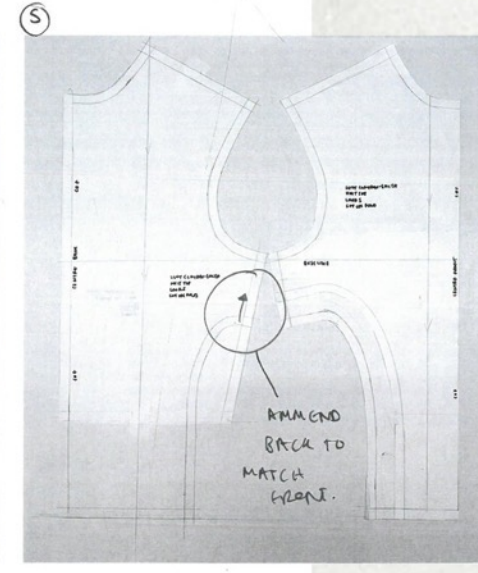
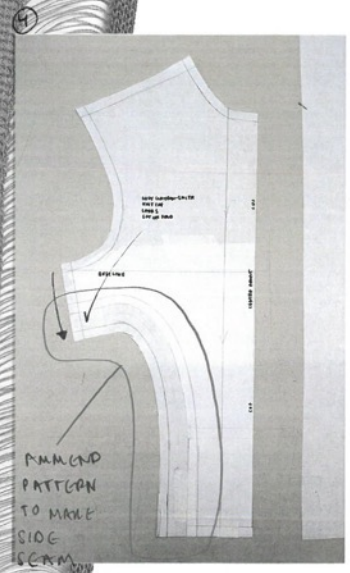
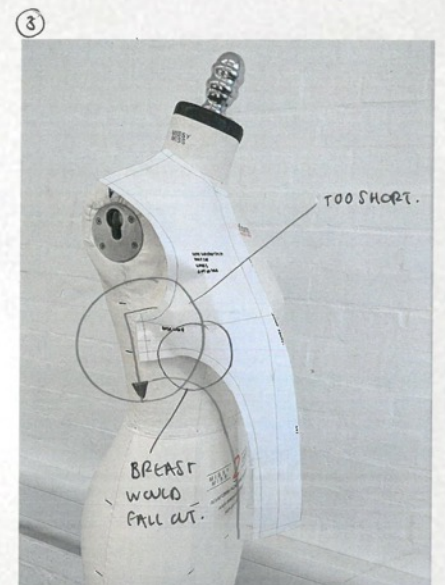
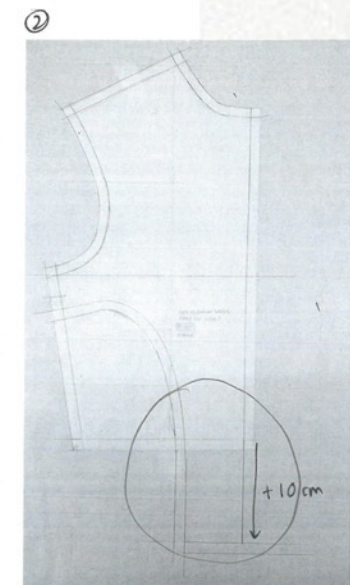
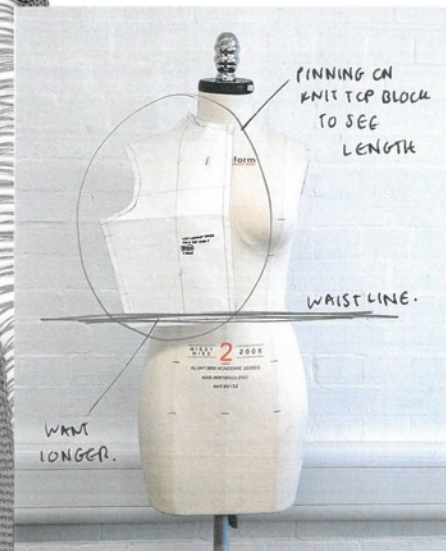
LUCY CLAYDON - SMITH	
FABRICATION : TEXTURED COTTON	SAMPLING PRICE :
SUPPLIER : KINGSTON UNIVERSITY	PRICE PER METRE :
COMPOSITION :	
WIDTH :	WEIGHT :



SILVER BUCKLES
from J.T BACHELOR

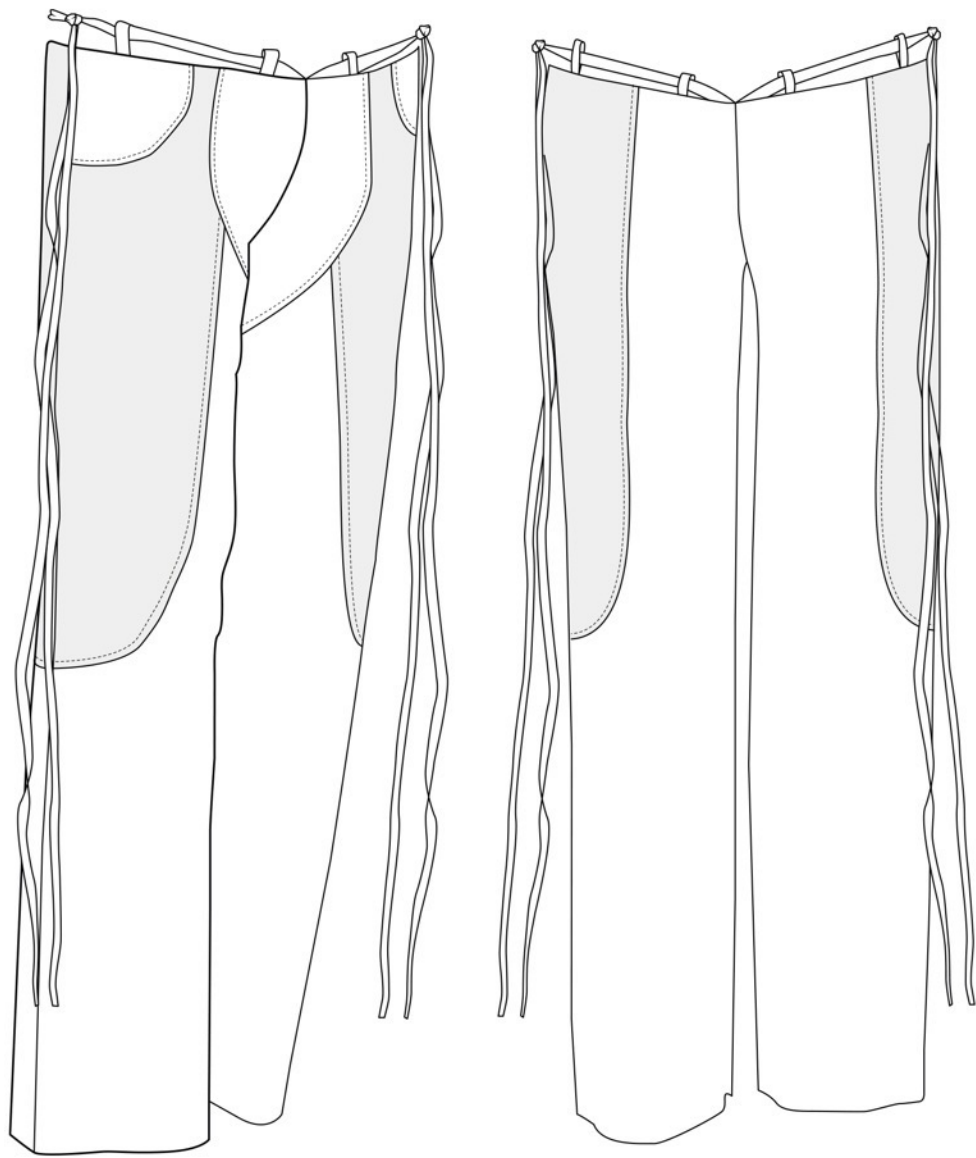
LUCY CLAYDON - SMITH	
FABRICATION : TEXTURED BEIGE LEATHER	SAMPLING PRICE :
SUPPLIER :	PRICE PER METRE :
COMPOSITION :	
WIDTH :	WEIGHT :



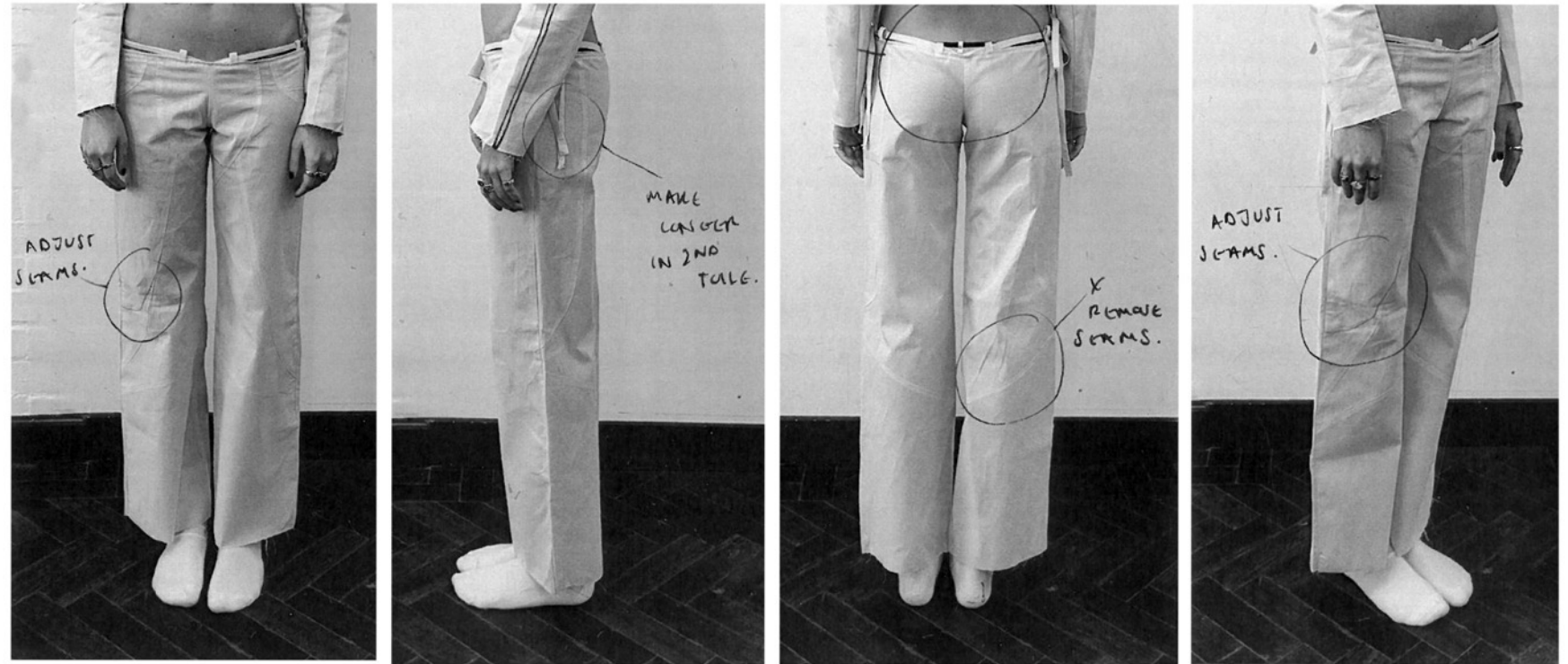


REIMS - GUEUX 1997

LUCY CLAYDON-SMITH

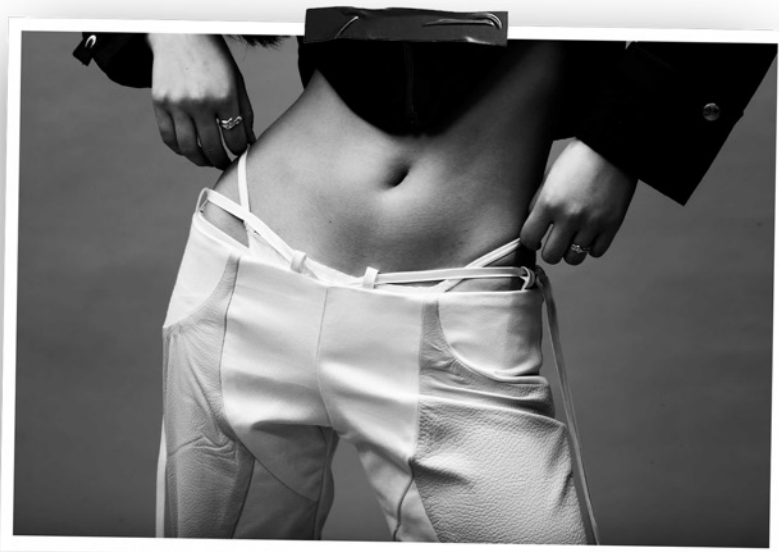


LOOK 3 FIRST FITTING W/ LOIS



FABRICATIONS FOR LOOK 3 TROUSER

LUCY CLAYDON-SMITH			
FABRICATION: TEXTURED BLEND LEATHER		SAMPLING PRICE:	
SUPPLIER:	PRICE PER METRE:		
COMPOSITION:			
WIDTH:	WEIGHT:		



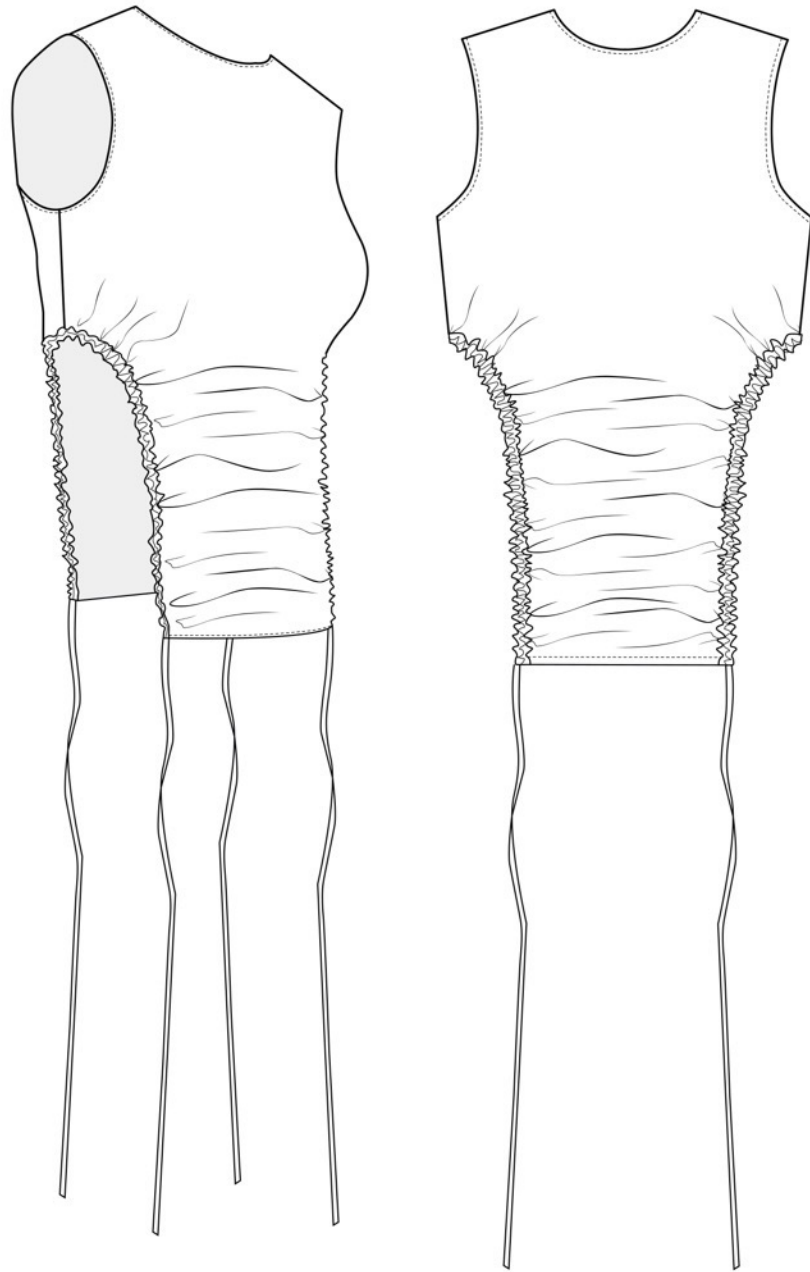
Women motorcyclists complicate this simple equation between leather and hard-edged masculinity. The Van Buren sisters were arrested several times during their cross-country ride in 1916, for wearing men's clothing. Other women who fear being considered mannish soften the dark ruggedness of the leather by selecting more 'feminine' colours such as red or pink, or adding decorative touches such as rhinestones or fringe. The jacket then highlights the contrast between the masculine hardness of the leather fabric and their feminine softness.

CONTRAST
CONTRAST VIBRANT.

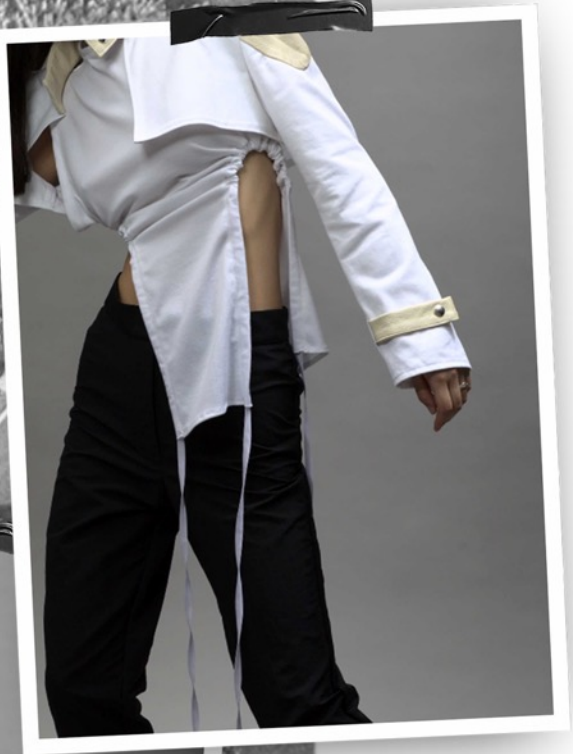
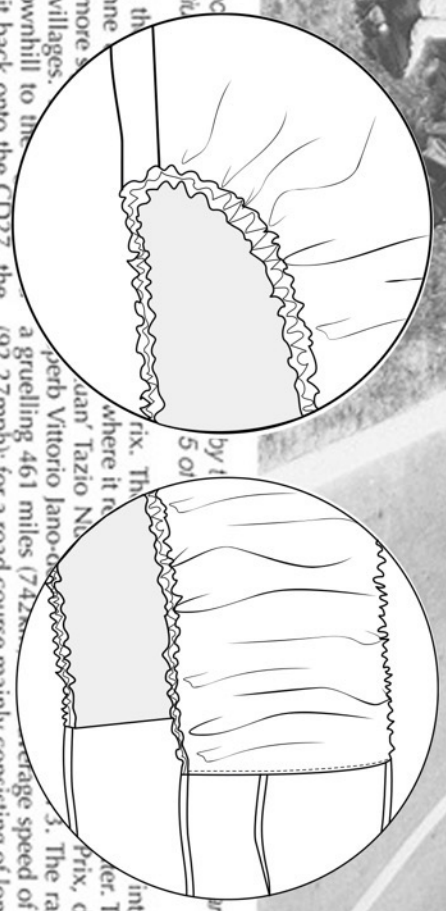
KDD
DETAILS
?

Other women take advantage of this same contrast by wearing far less leather. Think Bike Week in Daytona Beach, Florida, with its parade of bikini-clad women wearing only leather chaps for coverage, or the ubiquitous 'booth babes' or 'umbrella girls' at MotoGP and Superbike events, sporting navel-bearing tops and tight leather shorts. They expose their sexuality not simply by

LEATHER = SEXY?



and shops onto another minor road, the
 (mile) gentle uphill run to La Carene
 joined Route Nationale 31, a much more
 served Reims rather than outlying villages.
 the main straight, sloping gently downhill to the
 Thillois Hairpin which led the circuit back onto the CD27, the
 (92.27mph); for a road course mainly consisting of long straights



REIMS - GUEUX 1997

LUCY CLAYDON-SMITH